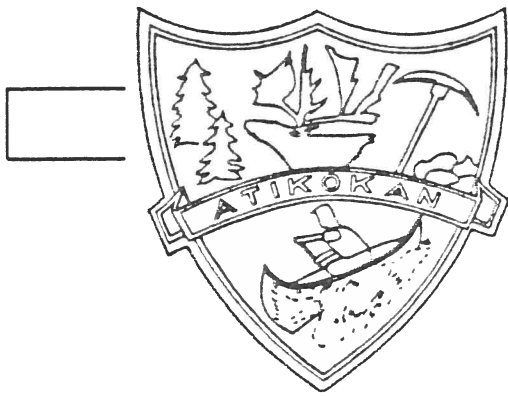




Atikokan





The Corporation of the Township of Atikokan

P.O. Box 1330
Atikokan, Ontario, Canada. P0T 1C0
Phone 807-597-2738, or 807-597-6755
Fax 807-597-6186

January 5, 1995

Columbia Forest Products
c/o R. E. Michels
Michels & Associates Ltd
115 Main Street West
ATIKOKAN, Ont
P0T 1C0

Dear Bob:

I would like to thank you for your presentation to Council on December 15, 1994. For Atikokan to be considered as a possible site for a veneer plant represents a great opportunity.

Although your time lines were tight, I hope that the following information meets your requirements.

If you have any further questions please do not hesitate to call.

Sincerely,

A handwritten signature in dark ink, appearing to read "R. Davidson for".

Robert Davidson
Reeve

:jef
attach

Canoe Capital

of Canada

January 5, 1995

Reeve and Council
The Corporation of the Township of Atikokan
P.O. Box 1330
Atikokan, ON
POT 1C0

Gentlemen:

I am pleased to enclose the information on Atikokan as per Columbia Forest Products' request.

I am available to answer any further questions that may arise.

Yours truly



E.B. Couch
Executive Director



Atikokan

ECONOMIC DEVELOPMENT CORPORATION

Table Of Contents

Atikokan Community Profile	2
Introduction	2
Condensed Statistical Data	2
Electricity	3
Natural Gas	3
Water Supply	3
Sewage System	3
Waste Removal	4
Telephone Service	4
Transportation	4
Financial Services	5
Municipal Services	5
Services to Business	5
Medical Services	5
Social Services	5
School System	6
Tourism and Recreation	6
Entertainment	7
The Local Economy	7
Land Development	7
Natural Resources	8
Fish Farming and Hatching	8
Trapping	8
Conclusion	9
Electrical Availability and Cost	11
Atikokan Hydro Power Costing	11
Ontario Hydro Power Costing	13

Site Information	15
Atikokan Township (Two Sites)	15
Proboard Manufacturing Ltd.	15
Caland Mine site	15
Ontario Hydro Co-location	16
Site Comparison	16
Natural Gas Installation	16
Available Workforce	22
Current and Projected Workforce	22
Historical Age Groups	22
Comparative Education Levels	23
Unemployment Levels	23
Average Wages	23
Economic Impact Assessment	25
Employment Changes	25
Employment Sources	25
Housing Requirements	25
Municipal Government Impact	26
Provincial Government Impact	26
Federal Government Impact	26
Assumptions Used in Economic Assessment	27
Calculations Used in Economic Impact Assessment	28
Employment	28
Employment Sources	28
Residential Municipal Taxes	28
Corporate Municipal Taxes	29
Corporate Spending	29
Annual Corporate Purchases	29
Local Multiplier	30
Regional Multiplier	30

Appendices

Appendix 1:
Atikokan Community Profile

Appendix 2:
Atikokan Hydro-Electric Commission
Conditions of Service

Maps

Atikokan Hydro Power Lines 12

Atikokan Township Sites 17

Caland Mine Site 18

Ontario Hydro Site 19

Charts and Graphs

Site Comparison 16

Current and Projected Workforce 22

Historical Age Groups 22

Comparitive Education Levels 23

Unemployment Levels 23

Economic Impact 25

 Assessment 25

 Assumptions 27

 Calculations 28

Atikokan Community Profile

Atikokan Community Profile

Introduction

Atikokan is situated on the northern border of Quetico Park in Northwestern Ontario, 200 km west of Thunder Bay. The name "Atikokan" is believed to be derived from the Ojibwa word meaning "caribou bones."

The economy is based on forestry, a thermal generating station, government services, tourism and a mixture of light manufacturing businesses. Atikokan offers a full range of community services from service clubs to a hospital.

Since Steep Rock Iron Mines and Caland Ore Company ceased operations in 1980, forestry and tourism are now the two most important activities of the community. Three large companies are currently cutting pulpwood in the area: Canadian Pacific Forest Products Ltd., Atikokan Forest Products, and Proboard Manufacturing Ltd.

Atikokan has highway access to Thunder Bay 200 km to the east, Winnipeg 530 km to the west, and the International border 150 km south at International Falls, Minnesota. The recent opening of Highway 622 offers faster access to Northern Ontario. Atikokan is centrally located within Northwestern Ontario, and offers easy access to both Canadian and American markets.

Condensed Statistical Data

Population	4,092	
Labour force	3,140	
Unemployment rate (current national average, 9.5%)	9.3%	(November, 1994)
Land area	372.96 km ² 144 miles ² 92,160 acres	or or
Annual precipitation	548.2 mm 237.4 mm	rain snow
Average temperature	15.8°C -15.9°C	summer winter
Major Industries	Proboard Manufacturing Ltd. Atikokan Forest Products Ontario Hydro	

Electricity

Electrical Energy for the Township of Atikokan is supplied by the Atikokan Hydroelectric Commission, a public utility that purchases power from the Ontario Hydro system and distributes it to customers in Atikokan.

Supply to the municipality is at 44,000 volts, delta, for heavy industry, and 8320/4800 volts wye for the rest of the municipality. Capacity of the system is 11,000 KVA and the present load is roughly 8,000 KW.

Available secondary voltages in the municipality are 120/240 volt, single phase; 240 volt, 3 phase; 3 wire delta; 120/208 volt 3 phase, 4 wire wye; and 600 volt, 3 phase, 3 wire delta.

Natural Gas

Centra Gas (Ontario) Ltd. maintains a complete network of underground gas pipelines to residential, commercial and industrial customers. Natural gas is supplied from western Canada.

Centra Gas requires \$27/metre in contributed capital to run new pipelines. This fee, however, can be waived based on volumes, and is subject to negotiation.

Water Supply

Water in Atikokan is supplied by the Atikokan River System, and is pumped from above Little Falls on the east side of town. Service is available to all areas except Highland Park. The system has a daily pumping capacity of 900 gallons per minute with three pumps operating. Most of the time, only one pump is running. Peak consumption usually occurs at noon, and between 4:00 pm and 7:00 pm. Pressure is 90 psi at the pump house.

Sewage System

The community is served by a modern sewage treatment plant. The system is capable of handling a population of 6,000 — an increase of 50%. Top capacity is rated at 6,500.

The rate of flow is 0.9 million gallons per day, with peak flow approaching 3 MGD. The plant could service a population of 10,000 with the addition of more settling tanks. The treatment plant's only by-product is a form of sludge used as fertilizer.

Waste Removal

Waste removal in Atikokan is contracted out. In residential areas of the community, the garbage is picked up once a week. For commercial customers, garbage is picked up as arranged.

Garbage is disposed of in a sanitary landfill site supervised by a custodian.

The Township is undertaking a landfill siting process to replace its current facility.

Telephone Service

Bell Canada provides telephone service to Atikokan. The office in Thunder Bay handles all service requests and may be reached through a toll free line.

Currently, the community is serviced by a generic DMS10 switch, enabling basic calling features (such as Call Waiting and Three-Way Calling). While long-distance is via a 4,000 cycle analogue line, modem speeds of 14,400 are possible.

By the Fall of 1995, Atikokan will be fitted with a digital fibre optic link. Remote switching is being negotiated, that would allow full customer calling features. In addition, digital features such as ISDN service will be available, giving Atikokan the same level of service as any Canadian city.

Transportation

Transportation to other centres is provided via Highway 11, rail, and three local airstrips (including a municipal airport). No local public transit system exists, but two taxi companies and a limousine service are available.

Air Service

Atikokan is served by a municipal airport, which is located within five kilometres of the town's core. The 100 foot by 3500 foot runway is paved.

NorOntair recently withdrew commercial air service, but negotiations are underway with Bearskin Airways of Sioux Lookout to renew the service.

Highways

The alternate Trans-Canada Route (highway 11) heads east-west, connecting Atikokan with Thunder Bay and Fort Frances. Highway 622 heads north to Highway 17 near Ignace.

Truck Transport

Two freight companies, Burky's Transfer and Lakehead Freightways, operate out of Atikokan. In addition several courier companies handle smaller packages.

Bus Service

Daily Grey-Goose bus service is available east and west. Most days, there two buses in each direction, providing ample passenger and parcel service.

Rail Service

While passenger rail service is no longer available in Atikokan, commercial service is. Given Atikokan's mining history and current industrial climate, a good local rail infrastructure exists.

Financial Services

Financial services in Atikokan consists of three banks, each with one branch: The Canadian Imperial Bank of Commerce, The Royal Bank of Canada, and the Toronto-Dominion Bank.

Municipal Services

The local government and several community organizations provide a full range of municipal services to individuals and businesses.

Services to Business

- Atikokan Chamber of Commerce.

Medical Services

- Atikokan Clinic (currently four doctors).
- Community Counseling Services.
- Physiotherapy Services.
- Medical Laboratory and Radiology (including ultrasound).
- Hospital including emergency services.
- Speech and language pathology.
- Home Care nursing for patients needing care at home.
- Public Health nursing through the Northwest Health Unit.

Social Services

- Community Corrections Worker (Probation and Parole).

- Family and Children's Services.
- Employment Learning Opportunities.
- Alcoholics Anonymous.
- Canadian Red Cross Society.
- Atikokan Crisis Centre.
- District Social Services.
- Crime Stoppers.
- Rainbow Day Care Centre.
- 2-3-4 Play Group.

School System

- Hemlock Elementary School.
- Saturn Avenue Elementary School.
- Atikokan High School.
- St. Patrick's Separate School.
- Confederation College campus, offering a range of business, industrial and personal development programs.
- Lakehead University campus, including live computer, audio and video links.
- Contact North, offering distance education services.
- Independent Learning Centre, offering a variety of correspondence courses.
- Northwest Enterprise Centre, a leader in the development and delivery of non-traditional education.
- Quetico Centre, a private, non-profit adult education centre.

Tourism and Recreation

- Atikokan Centennial Museum and Historical Park provide a reflection of the area's past.
- Atikokan ski hill boasts the largest vertical between Thunder Bay and Alberta.

- Atikokan Sports Days is a yearly summer festival organized by local townspeople and the Chamber of Commerce.
- Little Falls Community Centre offers curling in the winter and a challenging nine-hole golf course.
- Quetico Provincial Park is a 1,780 mile² canoe area of unspoiled wilderness.
- Regional Snowmobiling Routes allow winter travel throughout the area, including to the U.S. border, Ignace, Fort Frances and Thunder Bay over safe and well-maintained trails.
- Resorts and Outfitters throughout the area provide ample service and access to the fishing and canoeing opportunities in the area.

Entertainment

- The Atikokan Entertainment Series regularly brings quality plays, choirs, and musicians to Atikokan audiences.
- The Pictograph Gallery displays and sells quality local art and crafts.
- The municipal Parks and Recreation program includes golfing, curling, an arena, ball parks, an indoor swimming pool, bowling and a Pioneer Centre.
- The Atikokan Public Library, in addition to providing traditional services, is gearing up to provide on-line access (via modem) to a variety of information services.
- Numerous recreation and social clubs help satisfy residents' recreation and social needs.

The Local Economy

Atikokan has a stable, diverse economy rooted in the local natural resources.

Land Development

There are 132 miles² of land within the Atikokan boundaries being developed under the following four headings:

- Industrial and commercial.
- Residential.
- Recreational.

- **Conservational.**

A large percentage of this land remains in a natural state with Steep Rock Lake mining operations and the urban town site being the major land users. Both of these are located in the northern half of the municipality. Recreational uses are generally located in conjunction with the river, although some parks are located in residential areas.

Natural Resources

Atikokan's location in a vast wilderness with abundant natural resources has provided considerable wealth to the whole region. The important resources include lumber, mineral deposits and fur. In addition, the beauty of the area attracts thousands of visitors each year.

Mining

Atikokan's economy is closely linked to these natural resources. The area has been actively explored for gold, base metals and iron since the late 1800's. The area currently show strong potential for gold deposits and base metals. There are large low grade iron ore deposits, though development is unlikely due to market conditions.

Forestry

Logging is an important part of the local economy. The district is divided into four management units. These are the Sapawe Crown Management Unit, the Boise Cascade Management Unit, the Quetico Park Management Unit (unlicensed) and the Flanders Management Unit. Aside from Quetico Park, these areas are managed on a sustained yield basis.

Fish Farming and Hatching

A local entrepreneur runs a fish farm in the closed Caland Ore pit, five km north of town. The farm raises brook trout, rainbow trout and salmon in the sterile, disease-free and predator-free waters.

To support sport fishing and education, the local Sportsmen's Conservation Club has built a fish hatchery and education centre. They release hundreds of thousands of fingerlings into local lakes annually.

Trapping

There are roughly 100 trappers in the Atikokan area. Many are Aboriginal from the Lac la Croix First Nation bordering Quetico Park. Very few trap as a full-time job; most consider it seasonal work, balanced by summer guiding.

Conclusion

With full business, social, government, transportation, recreation, and education services; state-of-the art telecommunications links in a remote wilderness setting, Atikokan truly provides the "best of both worlds." An individual or business moving to Atikokan has available all the opportunities of a larger centre, in a quiet, friendly community.

Electrical Availability and Cost

Electrical Availability and Cost

The terms of reference supplied by Columbia Forest Products requests 10,000kv electrical service. At this level, Columbia would be a direct customer of Ontario Hydro. It would be beneficial for Columbia to purchase its own substation at \$2 million. By doing this, the company would receive a credit of 60¢ per kw demand.

For this information package, we assume the company would need roughly 4kva, and therefore we have provided Atikokan Hydro's conditions of services and rates.

Currently, Atikokan Hydro is planning an extension of its services. Columbia should make Atikokan Hydro aware, as soon as possible, of its plans so the utility can incorporate them into the service upgrade. (A copy of Atikokan Hydro's transmission lines is included.)

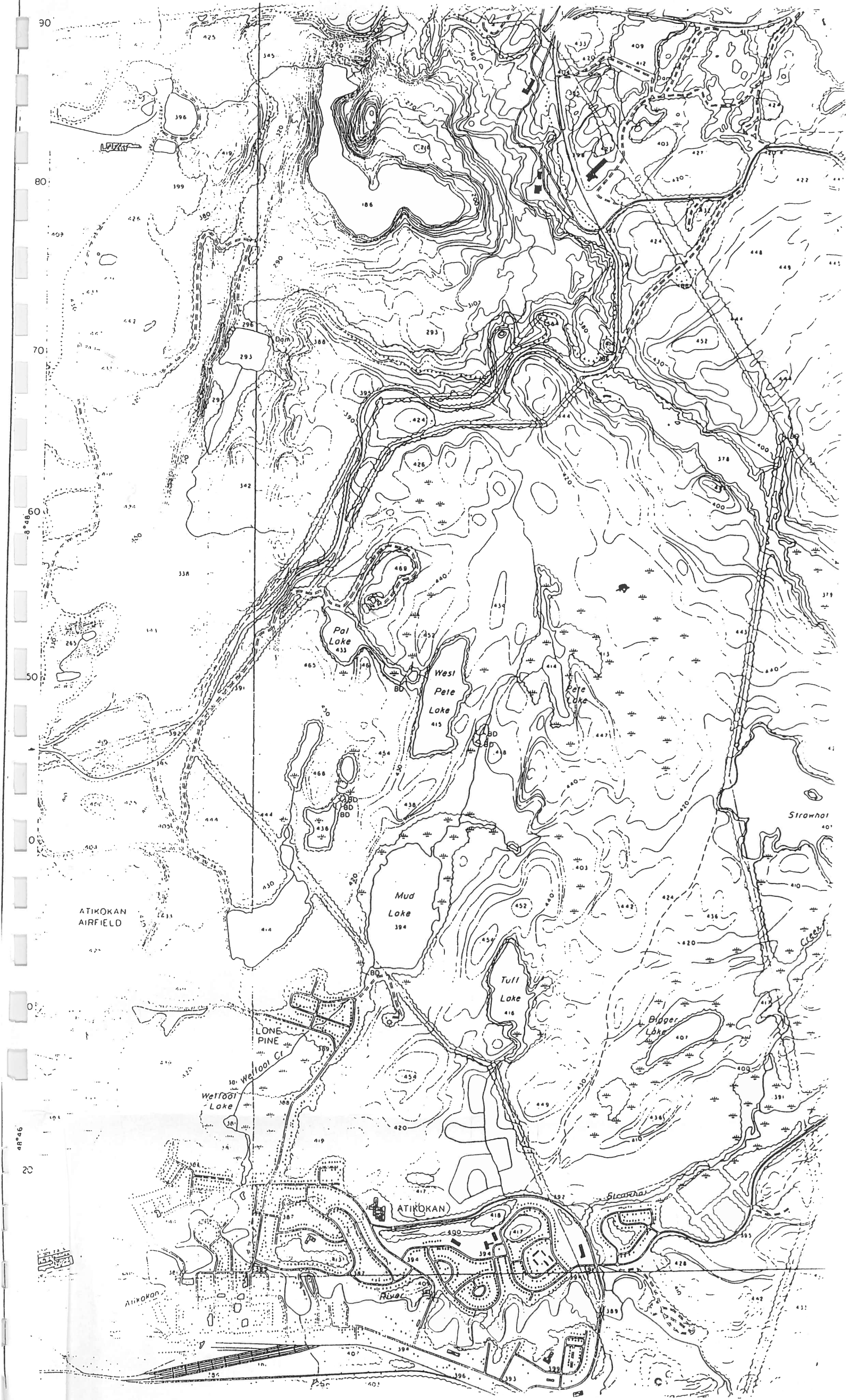
Atikokan Hydro Power Costing

The Atikokan Hydro power costings provided assume a 168 hour continuous week of operation, with a load factor approaching 80%, customer-owned transformers, and a power factor less than 90%. As Atikokan Hydro's conditions of supply (see Appendix) indicate, a customer of the proposed size would be required to contribute all capital for the needed infrastructure expansion.

At these rates and usage levels, Atikokan Hydro's net revenues are minimal. The utility is not in a position to negotiate lower rates.

The most cost effective expansion would be in close proximity to either the 3M2 or 3M3 lines (see map, next page). The 3M1 line is effectively abandoned at this time. A location within the town proper would be most cost-effective.

It is Atikokan Hydro's plan to extend the 3M3 to the Proboard Substation area to provide a dual supply loop system for the community. Any location along the loop could be designed to allow a dual supply. Since the 3M3 is near the railway for most of its length, it is a good candidate.



Ontario Hydro Power Costing

Ontario Hydro is currently under co-habitation negotiations with Columbia Forest Products and is unable to provide us with specific cost information.

The Atikokan Generating Station Manager did comment that, “we are in an excellent position to offer full services for such a facility in terms of power, steam, air, water, sewage, gas, mechanical and electrical shop facilities as well as access to the rail link.

Site Information

Site Information

Five potential sites are available. Maps highlighting their locations are attached.

Atikokan Township (Two Sites)

Two sites owned by the Township exist near Proboard and the Municipal Airport. They consist of:

- R-8-174 consisting of 159.49 acres: value \$6300.
- R-8-175 consisting of 165.43 acres: value of \$5200.
- Road access from airport road.
- Electrical service from line 3M2 (cost of service to be negotiated with Atikokan Hydro).
- Natural gas, sewer & water (cost to be negotiated with the utilities).
- Rail available by extending from Proboard.

Both properties consist mostly of tailings from Steep Rock mine. The outer fringe of each site is muskeg.

Proboard Manufacturing Ltd.

Proboard has property along side its plant that may be suitable for Columbia, but any and all discussions must be between the owner, Mr. Tom Plouffe and Columbia Forest Products Ltd.

The area consists of outcrop on one side and muskeg on the other.

Caland Mine site

The Caland Mine site is currently owned by a numbered company. It consists of:

- 38.56 acres of settled mine tailings and no swampy areas.
- Natural gas, hydro, road, sewer and water either on site or readily available.
- Rail access, though a spur line would have to be replaced as it was recently torn out (the cost of doing so is not available).
- The cost of the property is \$150,000

Ontario Hydro Co-location

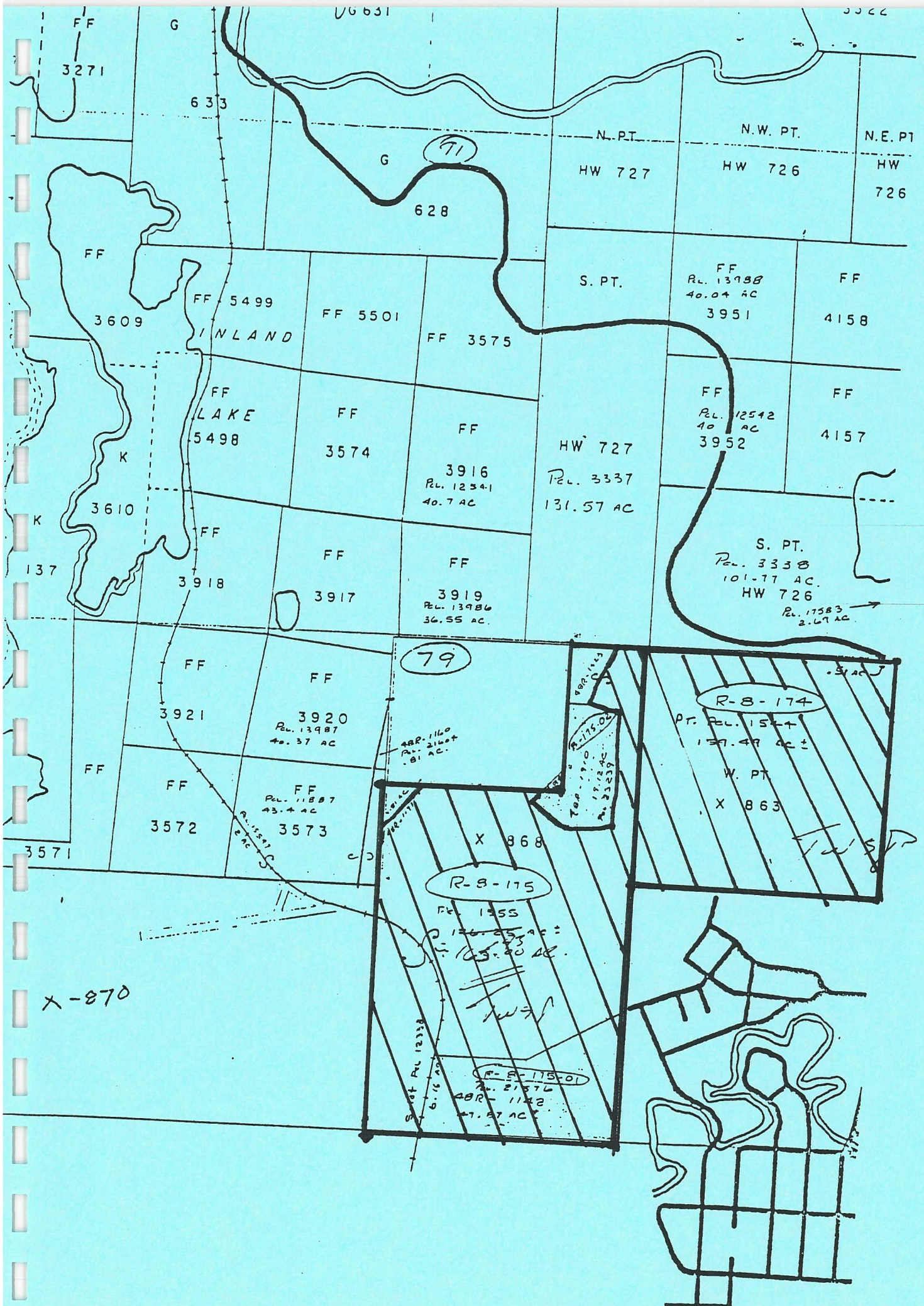
Little information is available to us from Ontario Hydro. The company and Ontario Hydro are currently in negotiations for co-location on the Atikokan Thermal Generating Station site.

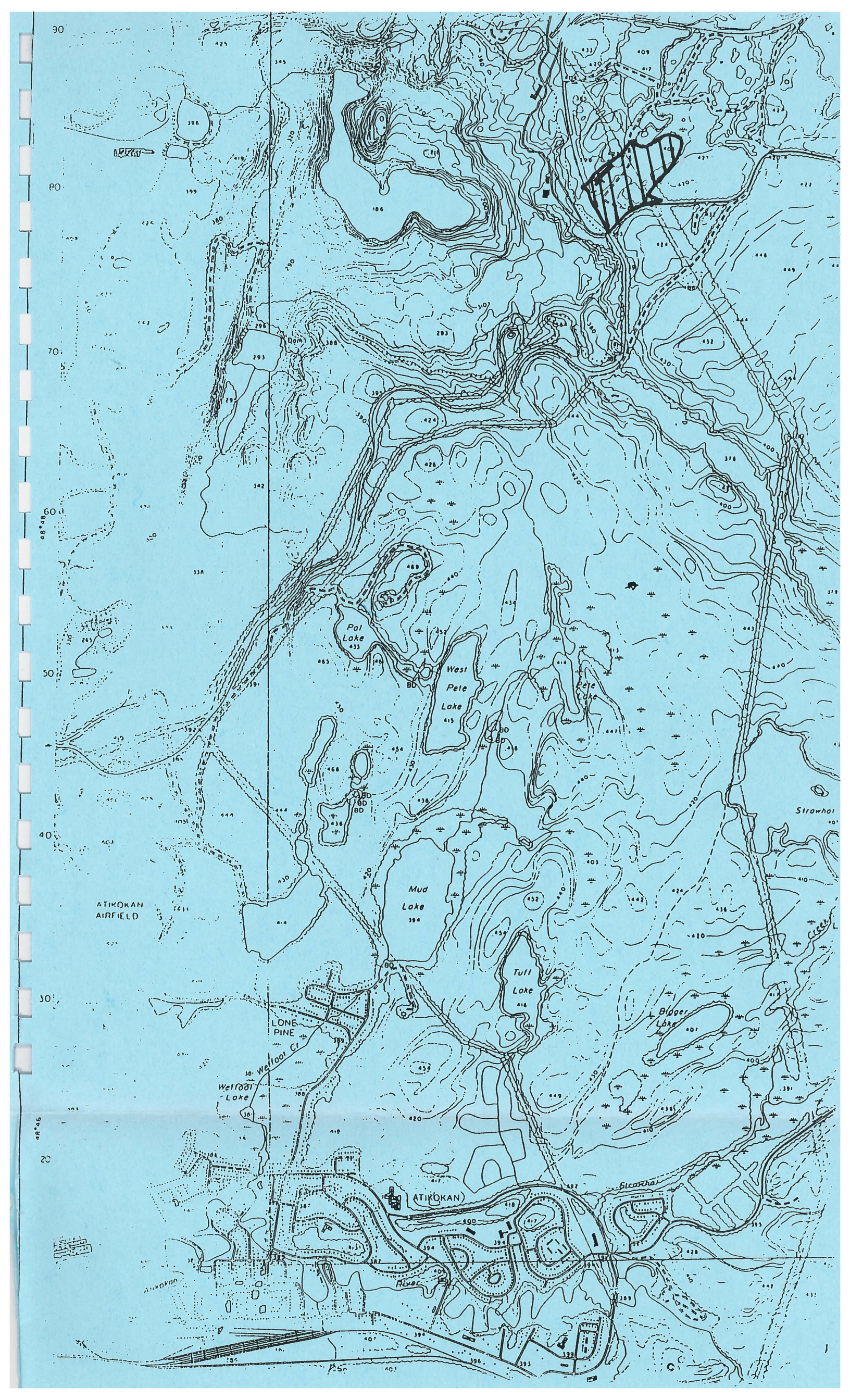
Site Comparison

	Township 1	Township 2	Proboard	Caland	Ont Hydro
Rail	Spur needed	Spur needed	Yes	Spur needed	Yes
Road	Nearby	Nearby	Yes	Yes	Yes
Water	Nearby	Nearby	Yes	Yes	Yes
Sewer	Nearby	Nearby	Yes	Yes	Yes
Gas	Nearby	Nearby	Yes	Yes	Yes
Hydro	Nearby	Nearby	Yes	Yes	Yes

Natural Gas Installation

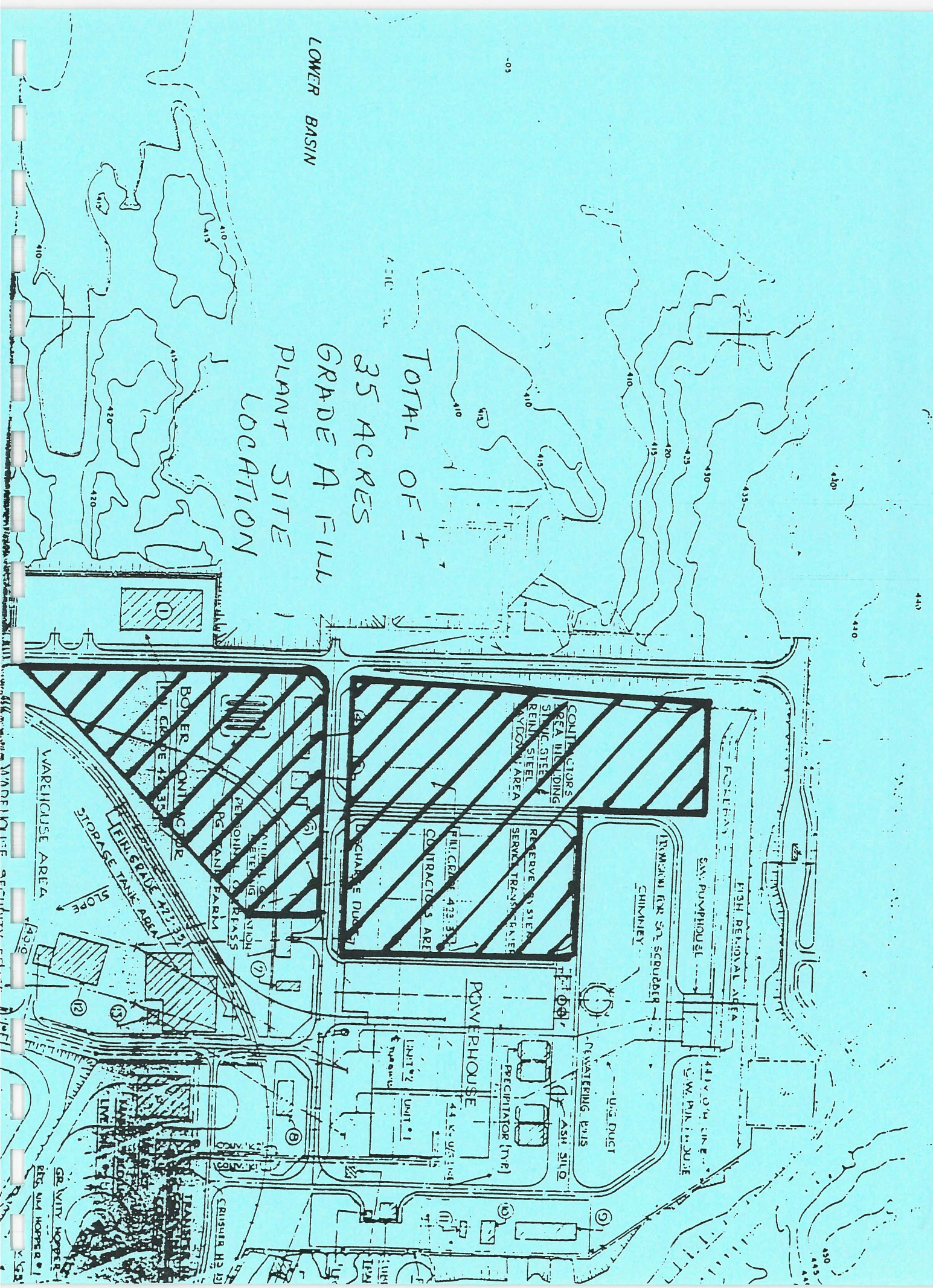
Centra Gas requires \$27/metre in contributed capital in order to run their gas lines. This fee can be waived, however, and is subject to negotiation, based on volumes.





LOWER BASIN

TOTAL OF +
35 ACRES
GRADE A FILL
PLANT SITE
LOCATION





P.O. Box 1900, Atikokan, Ontario P0T 1C0 (807) 597-1110

December 21, 1994

PL6-10200

MR. T. COUCH
Economic Development Officer
Atikokan Economic Development Corporation
P. O. Box 218
Atikokan, Ontario
P0T 1C0

Request for Site Information

In response to your request for information concerning space at Ontario Hydro's Atikokan GS site for a possible Wood Products Plant, I have attached copies of our site layout.

We currently have cleared areas that would be most suitable for this type of plant and these have been highlighted on the drawings. In addition it should be noted that we are in an excellent position to offer full services for such a facility in terms of power, steam, air, water, sewage, mechanical and electrical shop facilities as well as access to the rail link. *↑ GAS*

In line with one of our business mandates, sustainable energy development, each of our sites has been actively pursuing opportunities for co-habitation with industry as a way of improving our energy conversion efficiencies. As such we have been in discussion with R. E. Michels and Associates for some time regarding the possibility of being host to this venture. In light of this, I am not able to provide the specific cost information that you requested.

I trust this information is useful and if you have any further questions I can be contacted at 807-597-1110 (extn 208).

Yours truly,

A handwritten signature in cursive script, appearing to read "Graham Brown".

G. L. Brown
Station Manager
Atikokan GS

rof/Manager

Attach

Available Workforce

Available Workforce

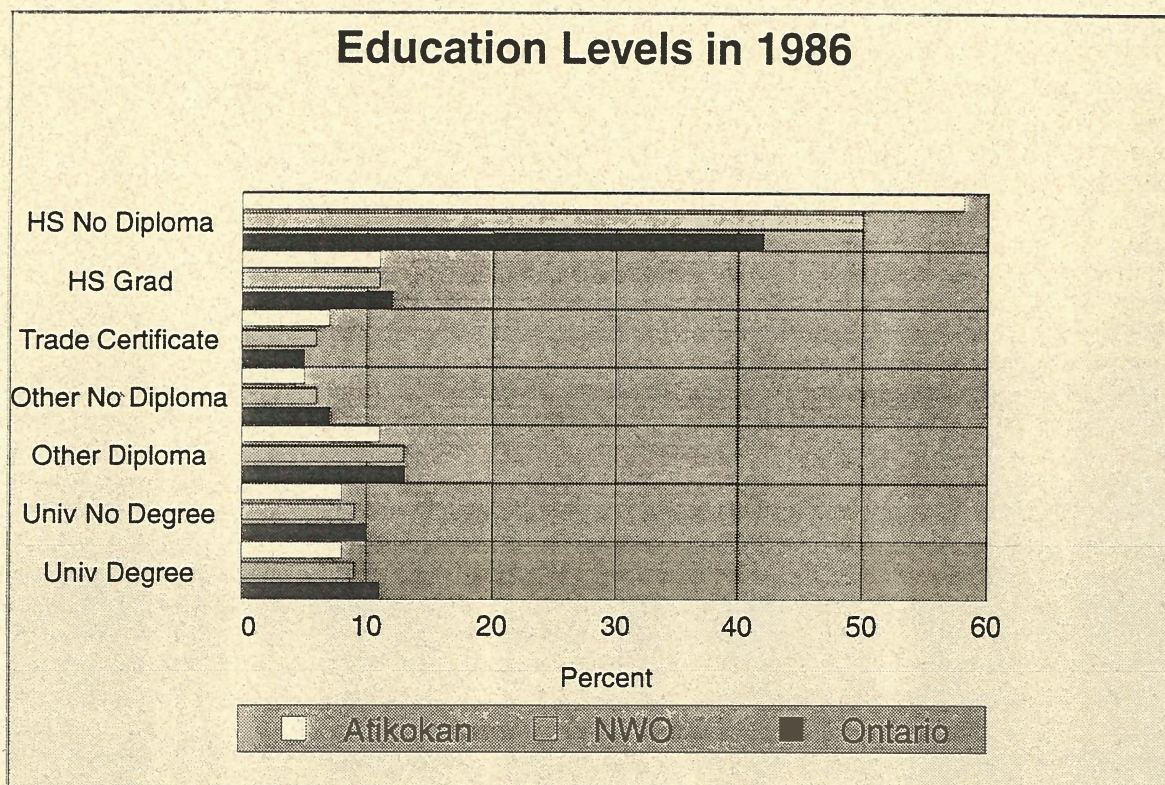
Current and Projected Workforce

Age Group	Actual 1991			Projected 1996		
	Male	Female	Total	Male	Female	Total
0 - 14	246	231	477	509	478	987
15 - 39	396	358	754	809	741	1560
40 - 64	296	299	595	614	620	1234
65+	172	140	312	355	290	645
Total	1,110	1,028	2,138	2,297	2,129	4,426

Historical Age Groups

Age Groups	Year				
	1971	1976	1981	1986	1991
0 - 14	2,225	1,755	1,105	980	988
15 - 44	2,710	2,740	2,060	2,835	1,847
45 - 64	970	1,090	985	910	949
65+	185	225	315	390	645
Total	6,090	5,810	4,465	5,115	4,429

Comparative Education Levels



Unemployment Levels

Labour Force: 3,140	UI Recipients	Unemployment Rate
1993	384	11%
June 1994	334	10.6%
November 1994	292	9.3%

Average Wages

- Comparable industrial operations: \$16/hour.
- Average labourer rate: \$11.30/hour.
- Average mechanic rate: \$14.96/hour.

Economic Impact Assessment

Economic Impact Assessment

Employment Changes			
	Atikokan	Region	Total
Direct job creation	125		125
Indirect job creation	48	94	142
Total new jobs	173	94	267
Employment Sources			
Workers coming off welfare	9	5	13
Workers coming off UIC	87	47	134
Workers entering the workforce	9	5	13
Workers migrating to Atikokan	69	38	107
Housing Requirements			
Workers migrating	69	38	107
People migrating	201	109	310
Available units	17	?	?
Shortage of units	53	?	?

Municipal Government Impact

Residential taxes preserved	\$112,353		
Residential taxes created	\$74,902		
Direct corporate taxes	\$300,000		
Indirect corporate taxes	\$116,122		
Municipal welfare savings	\$44,332		
Total	\$647,708		

Provincial Government Impact

Personal income tax	\$381,445		
Employer health tax	\$52,015		
WCB revenues	\$520,152		
Personal PST revenues	\$305,156		
Corporate PST revenues	\$353,748		
Welfare savings	\$235,364		
Total	\$1,847,880		

Federal Government Impact

Personal income tax	\$648,456		
UIC revenues	\$374,510		
CPP revenues	\$135,240		
Personal GST revenues	\$267,011		
Corporate GST revenues	\$353,748		
UIC savings	\$2,283,996		
Total	4,062,961		

Assumptions Used in Economic Assessment			
Local multiplier	1.39	Welfare cost per person per year	\$32,263
Regional Multiplier	1.75	Average wage	\$30,000
Household per job	0.90	Provincial income tax average	\$2,200
Columbia municipal taxes	\$300,000	Federal income tax average	\$3,740
Columbia employees	125	EHT ratio	1%
Household municipal taxes	\$1,200	UIC ratio	7%
Total welfare	68	CPP ratio	3%
Employable welfare	48	WCB ratio	10%
Total UIC	292	Family size	2.90
Total workforce	3,140	Total houses	1,650
Unemployment rate	9%	Vacancy rate	1%
Columbia local spending	\$1,775,641	Provincial sales tax rate	8%
Columbia regional spending	\$1,480,342	Federal sales tax rate	7%
Local welfare ratio	0.16	UIC percent of income	57%
Provincial welfare ratio	0.84		

Note:

Appraisal factors for municipal taxes include span, height, windows (number and type), lighting, doors (number and type), whether packaged or custom building, foundation type, foundation thickness, weigh scale, loader for chips.

We have assumed annual taxes of \$300,00 based upon similar local assessments.

Calculations Used in Economic Impact Assessment

<u>Employment</u>	Subtotal	Total		
Direct	125			
Local spin-off	48			
Total, Atikokan		173		
Regional spin-off	94			
Total, region		267		
<u>Employment Sources</u>	Percent	Local	Regional	Max
Welfare	5%	9	5	48
UIC	50%	87	47	292
Other local	5%	9	5	283
Out-of-town	40%	69	38	
<u>Residential Municipal Taxes</u>	Subtotal	Total	Preserved*	Created
Average taxes	\$1,200			
Jobs	173		104	69
Households	156			
Total Annual taxes		\$187,255	\$112,353	\$74,902
* "Preserved" refers to residents versus immigrants to Atikokan, not to jobs preserved.				

<u>Corporate Municipal Taxes</u>				
Columbia	\$300,000			
Taxes per employee	\$2,400			
Spin-off taxes	\$116,122			
Total corporate taxes		\$416,122		
<u>Corporate Spending</u>				
Columbia local	\$1,775,6541			
Columbia regional	\$1,480,342			
Other local	\$687,301			
Other regional	\$1,110,256			
Total local		\$2,462,942		
Total regional		\$2,590,598		
<u>Annual Corporate Purchases</u>				
	AFP		Proboard	
	Atikokan	Region	Atikokan	Region
General	\$892,000	\$857,000	\$275,000	\$820,000
Manufacturing	5,171,000	2,276,000	1,972,000	2,975,000
Total	6,063,000	3,133,000	2,247,000	3,795,000
Employees	395		190	
Spending/Employee	15,349	7,932	11,826	19,974
Average	14,205	11,843		
Columbia	1,775,641	1,480,342		

<u>Local Multiplier</u>				
Total employment	1,842			
Public sector employment	491			
Private sector employment	1,333			
Export employment	824			
Linked service employment	509			
Local multiplier	1.39	1/(1-service/total)		
<u>Regional Multiplier</u>				
Regional multiplier	1.75			
<p>Roughly 55% of non-government services are bought in Atikokan. The remaining 45% is split between the region and the province. In addition to 3.9 jobs created by each 10 export jobs in Atikokan, another 3.6 regional jobs are created — 7.5 in all.</p>				

Appendix 1

Atikokan

Community

Profile

INDEX

	Page
SECTION I - Condensed Statistical Data	
Introduction	1
History	2
Major Activities in Atikokan	3
Market Area	3
Location	4
Geographic Data	7
SECTION II- Human Resources	
Population	1
Education	3
Income Data	4
SECTION III - Local Government	
Township of Atikokan	1
Annual Report of Operations	1
Tax Base	3
License Fees & Service Charges	5
Government Services	7
Municipal Services	11
SECTION IV - Municipal Services	
Medical Facilities	1
Special Services	2
Education	3
SECTION V - Tourism & Recreation	
Tourist Attractions	1
Tourist Accommodations & Outfitters	4
Recreational & Cultural Activities	6
SECTION VI - The Local Economy	
Economic Base of Atikokan	1
Other Services	5
Industry and Business Directory	7

SECTION I

CONDENSED STATISTICAL DATA

SECTION II

HUMAN RESOURCES

Atikokan Community Profile

Population of Atikokan

Year	Population
1979	5,162
1980	4,703
1981	4,452
1982	4,744
1983	4,745
1984	4,745
1985	4,442
1986	4,345
1987	n/a
1988	4,092

POPULATION DISTRIBUTION BY SPECIFIED AGE GROUPS AND SEX

AGE	MALE	FEMALE	TOTAL
0 - 4	119	107	226
5 - 14	306	280	586
15 - 25	350	311	661
26 - 35	381	355	736
36 - 45	278	262	540
46 - 55	191	206	397
56 - 65	214	221	435
66 yrs +	204	226	430
Unknown	42	39	81
Total	2,085	2,007	4,092

Source: Township of Atikokan Census 1988

Atikokan Community Profile

<u>Households</u>		<u>Families</u>	
No. of Persons Per Household	No. of Households	No. of Children Per Family	No. of Families
1	300	0	400
2	490	1	335
3	300	2	330
4-5	435	3 or more	155
6-9	40		
10+	-		
Total Households	1,565	2 Parent Families	1,050
Average No. of Persons/Household	2.7	1 Parent Families	160
		Total Families	1,210
		Average No. of Children/Family	1.2

LEVEL OF EDUCATION

Population 15 Years and Over	3,350
Highest Level of Schooling	
Less than Grade 9	605
Grades 9-13 - w/o Secondary Certificate	1,300
- with Secondary Certificate	405
Trades Certificate or Diploma	175
Other Non-University Education - w/o Certificate	85
- with Certificate	420
University - w/o Degree	175
- with Degree	180

Source: Statistics Canada 1986

Atikokan Community Profile

EDUCATION

The following tables show the 1989 student enrolment for the Atikokan primary, elementary and secondary schools by grade classification.

<u>Grade</u>	<u>Public</u>	<u>Separate</u>
Junior Kindergarten	45	36
Kindergarten	32	29
Grade 1	40	32
Grade 2	38	33
Grade 3	32	31
Grade 4	48	29
Grade 5	35	37
Grade 6	35	31
Grade 7	23	28
Grade 8	25	33
Total	358	319
Grade 9	60	
Grade 10	59	
Grade 11	70	
Grade 12	77	
O.A.C.	24	
Part time	5	
Alternate Learning Program	7	
Continuing Education	127	
Total	428	

<u>Graduate</u>	<u>Female</u>	<u>Male</u>	<u>Total</u>
Grade 12	37	27	64
O.A.C.	9	12	21

Teaching Staff

The public school system employs nineteen elementary teachers and thirty one high school teachers. The separate school is served by nineteen teachers. There is a total of sixty nine full time teachers in the Atikokan school system.

Atikokan Community Profile

INCOME DATA

<u>Income Distribution</u> Income Class	No. of Males	No. of Females
\$ Under 1 000	40	125
1 000 - 2 999	105	155
3 000 - 4 999	45	165
5 000 - 6 999	75	100
7 000 - 9 999	165	285
10 000 - 14 999	210	210
15 000 - 19 999	105	135
20 000 - 24 999	120	80
25 000 - 29 999	220	60
30 000 - 34 999	130	15
35 000 +	380	40
Total	1,595	1,370
Average Income \$	23,479	10,607
Average Family Income \$	36,995	

Source: Statistics Canada 1986

Hourly Income of the Atikokan Workforce - 1987

Hourly Income	Proportion of Workforce
less than \$ 5.00	4%
\$ 5.00 - \$ 5.99	9%
\$ 6.00 - \$ 6.99	5%
\$ 7.00 - \$ 7.99	6%
\$ 8.00 - \$ 8.99	8%
\$ 9.00 - \$ 9.99	2%
\$ 10.00 - \$ 10.99	9%
\$ 11.00 - \$ 12.99	23%
\$ 13.00 - \$ 14.99	2%
\$ 15.00 - \$ 16.99	29%
\$ 17.00 - \$ 20.00	3%

Source: Andersen Management Services, Employment Survey

Atikokan Community Profile

Occupational Divisions in Atikokan

Occupational Division	Male	Female	Total
Managerial/Administrative	80	80	160
Teaching and related	20	70	90
Medicine and Health	5	50	55
Technological, Social, Religious	85	25	110
Clerical and related	45	290	335
Sales	40	85	125
Service	135	205	340
Primary	195	20	215
Processing	115	35	150
Machining, Fabrication, Repair	205	20	225
Construction	165	-	165
Transport, Equipment Operating	60	5	65
Other	120	10	130
Total	1,270	895	2,165

Source: Statistics Canada 1986

Labour Force	2,000	
Employed	1,240	62 %
Full time	198.4	16 %
Part time		
Unemployed	400	20 %
Involved in Training Programs	40	2 %

10% of the Atikokan workforce are chronically unemployed or underemployed. The major barrier to employment is education.

Information re: Atikokan Area statistics based on income and reported by Stats Canada, 1988

	Atikokan	Ontario	Canada
Number of taxpayers	3050		
Change from 1983	-7%	15	14
% Females	47	49	49
% Married	57	57	56
% By age			
< 25	16	17	16
25-44	45	46	47
45-64	27	25	25
> 64	11	12	12
% With income greater than			
\$15,000	52	60	55
\$25,000	34	38	35
\$35,000	20	22	18
\$50,000	6	9	7
\$75,000	x	2	2
\$100,000	x	1	1
Median total income			
Male	\$26,000	26,400	25,600
Female	\$10,000	14,000	12,200
Both sexes	\$16,100	19,300	17,200
% change since 1983	20	32	26
% of taxpayers reporting U.I. benefits	31	14	20
Taxpayers reporting family allowance	675	1.3M	3.66M
Family allowance benefits	\$445,000	868M	2,454M

August 13/90

SECTION III

LOCAL GOVERNMENT

Atikokan Community Profile

Township of Atikokan

Atikokan is governed by a Reeve and six Councillors. The Reeve and the Council are nominated and elected by the total voting age population. Elections occur every three years, on the second Monday in November.

Town Council

Reeve: Richard Griffiths

Councillors: Dennis Brown
Lena Kaartinen
Garry McKinnon
Emile Morrisette
Sandra Nash
Charles Viddal

Township Officials

Clerk Treasurer
Fire Chief & Property Insp
Police Chief
Recreation Director
Solicitor

Susan Bryk
Finn Warren
John McInnis
Ed Morrisette
Lawrence Eustace

ANNUAL REPORT OF OPERATIONS - 1988

Total Assessment (000's)	9,795
Per Capita	1,837
Commercial, Industrial business as % of taxable assessment	40.8
assessment	3,193
Exempt Assessment (000's)	

	<u>Tax Structure</u>	
	<u>1988</u>	<u>1989</u>
Total Assessment	\$ 9,835,774	\$9,835,774
<u>Basis of Assessment</u>	<u>1987</u>	<u>1988</u>
<u>Taxation</u>		
Realty & Business Tax imposed for Municipal & School Board Purposes	\$ 3,474,308	\$ 3,750,929
<u>Grants</u>		
Province of Ontario contribution	6,420,635	2,960,175
Other Municipal and School Revenues	221,795	1,700,649
Total Revenues	\$ 10,116,738	\$ 8,411,753
Per Capita	2,277	1,837

Atikokan Community Profile

Revenue For General Municipal Services (\$ 000's)

Taxation (includes water and sewage charges)	3,166
Payments in lieu of taxes	585
Ontario Unconditional Grants	1,447
Other Grants, Fees and Service charges	2,104
Other	1,111
Total	8,413

Municipal Expenditures

Municipal General Government	\$ 633,525
Fire Protection	143,184
Police	700,407
Other Protection	23,253
Street Lighting	127,900
Public Works	2,078,366
Sanitation	1,769,979
Health	91,047
Welfare	357,111
Recreation & Cultural Services	749,624
Planning and Development	355,229
Education	1,135,970
Total Expenditure	\$8,165,595

Provincial Equalization Factor

1985	12.91
1986	13.46
1987	13.50
1988	n/a

Atikokan Community Profile

Historical Mill Rates 1975 - 1989

Year	Residential	Commercial
1975	74.06	85.56
1976	73.47	84.22
1977	90.85	104.32
1978	101.59	116.48
1979	103.79	119.11
1980	108.78	127.98
1981	126.32	148.60
1982	134.96	158.77
1983	157.62	185.44
1984	174.98	205.86
1985	189.52	222.97
1986	215.56	253.60
1987	224.61	264.24
1988	236.58	278.33
1989	254.35	299.23

TAX BASE

	<u>1979</u>	<u>%</u>	<u>1987</u>	<u>%</u>
Residential	\$ 5.21 +	33.3	\$ 5.71	57.9
Commercial	6.87	44.0	3.01	30.5
Business	<u>3.55</u>	<u>22.7</u>	<u>1.15</u>	<u>11.6</u>
Total	\$ 15.63	100.0	\$ 9.87	100.0

+ = \$ million

	<u>1988</u>	<u>%</u>	<u>1989</u>	<u>%</u>
Residential	\$ 5.80	59.2	\$ 5.67	57.7
Commercial	2.89	29.5	3.00	30.5
Business	<u>1.11</u>	<u>11.3</u>	<u>1.16</u>	<u>11.8</u>
Total	\$ 9.80	100.0	\$ 9.83	100.0

Atikokan Community Profile

MILL RATE

1978 = 101.59	1986 = 215.56	=	112% increase
1986 = 215.56	1989 = 254.35	=	18% increase

MUNICIPAL COSTS VS. MILL RATE

1981 - 1985

Increase in municipal expenditures	= + 25%
Increase in mill rate	= + 50%

1985 - 1989

Increase in municipal expenditures	= + 17%
Increase in mill rate	= + 34%

AVERAGE HOUSEHOLD CHARGES

1978 = \$ 227	1986 = \$ 581	= + 156%
1986 = \$ 581	1988 = \$ 798	= + 37%

TAX ARREARS

1977 = 3.5%	1986 = 16.7%
-------------	--------------

(Ministry of Municipal Affairs guidelines indicate that the rate should not exceed 12%)

TAXES, FEES FOR LICENSES AND PERMITS AND OTHER SERVICE CHARGES

Property Tax	\$ 1,371,344
Average Residential Tax (not including school tax)	798
Commercial Property Tax	915,960
Business Tax (depends on business)	<u>329,100</u>
TOTAL 1988 TAX	\$ 2,616,404

Atikokan Community Profile

PROVINCIAL AND FEDERAL GOVERNMENT

Departments of the Provincial Government:

Ministry of Natural Resources	597-6971
Ministry of Northern Development and Mines	597-2701
Ministry of Transportation and Communications	597-6700

Departments of the Federal Government:

Employment and Immigration, Canada Employment Centre	597-2485
Post Office	597-6979

Provincial Member of Parliament

Mr. Howard Hampton (NDP) MPP	Atikokan office 807-597-2629
Rainy River District	
Queens Park, Parliament Buildings	
Toronto, Ontario	
M7A 1A2	

Federal Member of Parliament

Mr. Iain Angus (NDP) MP	Zenith 64630
Thunder Bay - Atikokan District	
House of Commons	
Ottawa, Ontario	

Thunder Bay Office	807-623-4214
129 May Street South	
Thunder Bay, Ontario	

Atikokan Office	807-597-2629
-----------------	--------------

Atikokan Community Profile

LICENSE FEES AND OTHER SERVICE CHARGES

Dog Licenses
By-Law 1368

\$4 - \$7 per year for spayed females or neutered males

\$15.00 per year for unsplayed or unneutered animals

Amusement and Licenses

In Atikokan, no person shall carry on, operate, keep, maintain, exercise, or engage in trades, callings, businesses, occupations without a license from the Board of Trustees and every person so licensed shall be subject to the provisions of the By-Law No. 71.

Places of amusement not specifically mentioned to which admission is charged:

No Admission charge	\$ 5.00
Miniature Golf Course	\$ 35.00
Merry-go-rounds	\$ 20.00
Vending machines (per sq. ft. of space) (min)	\$ 5.00
Vending machines/sq. ft. (max.)	\$ 10.00
Bowling Alleys 1-2 lanes	\$ 15.00
Circus (depends on size)	\$ 200.00 to \$ 500.00/day
Theatres (depending on seating)	\$ 10.00 - \$ 50.00
Restaurants (depending on seating)	\$ 5.00 - \$ 10.00
Service Stations	\$ 10.00
Small Businesses and Tradesmen Business License Fees	Bakeries \$ 10.00 Dry Cleaners \$ 10.00 Junk Dealers \$ 30.00 Pedlars (Atikokan Resident 1 yr) \$ 33.00 Pedlars (others) \$ 400.00 Buses, passenger (1 bus) \$ 30.00 Taxi Drivers (1 cab) \$ 10.00

Construction and Trade Permit Fees

Electricians \$ 10.00 - \$ 100.00
Plumbers \$ 5.00 - \$ 50.00

Fees for permit to construct new buildings to make alterations to build garages, etc., generally the same value. (value of \$ 101 to \$5,000)

\$ 10.00

GOVERNMENT SERVICES

ATTIKOKAN ECONOMIC DEVELOPMENT CORPORATION

The AEDC operates the Business Development Centre whose purpose is to support the creation of additional, permanent private sector employment and to

- i) assist in the establishment of new small businesses
- ii) assist in the expansion of existing small businesses
- iii) stabilize and protect existing small businesses

through the provision of advisory and investment services.

The Business Development Centre administers the Community Investment Fund which provides funds for loans, loan guarantees and equity investment which is used to:

- i) create new small business
- ii) expand, stabilize and protect existing businesses

to generate and maintain permanent employment.

The Business Development Centre also administers the Self-Employment Incentive. The SEI is designed to provide grants for income support in lieu of social assistance or unemployment insurance to individuals during a period in which they are in the process of developing long term self-employment.

COMMUNITY FUTURES COMMITTEE (CFC)

1. The CFC has the responsibility to organize for the challenges of economic development for generations to come.
2. The CFC is a lead organization which:
 - i) provides liaison between the community and various levels of government
 - ii) involves and gets the participation of the private sector and other public sector organizations in the:
 - identification of need
 - the direct or indirect implementation of programs and services
 - the evaluation and critique of programs and services to help individuals/groups adjust to their economic environment and to maintain, create and expand local employment
3. The CFC is a non-profit community based organization.
4. The CFC actively participates in regional economic development activities and contributes to the formation of effective, regional, provincial and national economic development policy.

Atikokan Community Profile

COMMUNITY INDUSTRIAL TRAINING COMMITTEE (CITC)

The CITC acts as a training catalyst by:

- identifying local labour market training/skill development needs
- recommending, promoting and coordinating training programs to meet these needs
- organizing local activities to discuss training issues, initiatives and opportunities
- promoting skilled occupations

POSTAL SERVICES

The Township of Atikokan is served by one post office located in the downtown core. Hours are from Monday to Friday 8:30 a.m. to 5:00 p.m., Saturday 8:30 a.m. to noon. Service standards for a properly prepared letter is two days locally, 3 days between cities in the same province and 4 days nationally.

Delivery to and from Atikokan is on a once a day basis. The deadline for outgoing mail from Monday to Friday is 4:15 p.m. and noon on Saturday.

Mail from all centres arrives in Atikokan once a day.

FIRE PROTECTION

There is one fire station in Atikokan. The staff includes one full-time Fire Chief, sixteen part-time volunteer fire fighters and six part-time officers.

The fire station itself is equipped with two Class A pumpers, one van, a rescue van with auto extraction equipment and various other equipment. The fire underwriting rate is Group I.

LAW ENFORCEMENT

The Atikokan Township Police restricts its operations to the Township of Atikokan involving approximately 144 square miles.

The staff includes the Police Chief, one sergeant, eight constables and one civilian (office). This force is responsible for community based policing covering criminal and traffic investigations, preventative policing and liaison with other agencies.

The Ontario Provincial Police detachment in Atikokan is in charge of patrolling the area of Highway 11 from Huronian to Mine Centre. The force may also be called upon to assist the municipal police when the need arises.

Court resources are available in Atikokan and are quite extensive. Courts operating on a regular basis are the Provincial Court, the Criminal Division, the Family Division, the Juvenile and the Summary Conviction Court. On occasion other courts such as the Civil Matters Division and the Citizenship Court are available if required.

Atikokan Community Profile

CANADA EMPLOYMENT CENTRE

Employment and Immigration offers many services to employers and employees. The local centre provides information about employment opportunities locally, regionally, and nationally, assisting clients with:

- i) resume writing
- ii) aptitude testing
- iii) questions about new training programs
- iv) U.I.C. claims and enquiries
- v) Canadian Armed Forces entry
- vi) mobility assistance

A full-time counsellor is available to answer questions about the above services.

The office hours are Monday to Friday 8:00 a.m. to 4:30 p.m.

For details on other services and programs, please attend the local office.

ELECTRICITY

Electrical energy for the Township of Atikokan is supplied by the Atikokan Hydro Electric Commission, a public utility that purchases power from the Ontario Hydro system and distributes it to customers in Atikokan.

Supply to the Municipality is at 44,000 volts, delta, for heavy industry and 8320/4800 volts, wye, for the rest of the Municipality.

Capacity of the system is 11,000 KVA and the present load is approximately 8,000 KW.

Available secondary voltages in the Municipality are 120/240 volt, single phase; 240 volt, 3 phase, 3 wire delta; 120/208 volt, 3 phase, 4 wire wye; and 600 volt, 3 phase, 3 wire delta.

Rates (effective April 1, 1986)

Domestic (Monthly Rate)

Consumption Cost/KWH

First 250 KWH (kilowatt hours)
All additional

10.52 cents
5.42 cents

General Service (Industrial, Commercial)

Demand Charge: First 50 kilowatts of billing
demand per month

nil

Balance of billing per month

\$ 3.65

Atikokan Community Profile

Energy Charge

First block of 250 KWH per month	10.52 cents
Second block of 12 250 KWH per month	4.15 cents
Next block of 1 530 500 per month	4.17 cents
All additional monthly consumption	2.50 cents
Minimum monthly bill (under 50 KW)	\$ 6.50

Rental Water Heaters

40 Gallon Water Heaters	\$ 2.15 per month
50 Gallon Water Heaters	\$ 2.55 per month

NATURAL GAS

ICG Utilities (Ontario) Ltd. maintains a complete network of under ground gas pipelines to residential, commercial and industrial customers. Natural gas is supplied from Western Canada.

Rates

Rate 101 - Residential Service

	<u>\$ per cubic metre</u>
First 100 cubic metres per month	0.07463
Next 200 cubic metres per month	0.06764
Next 200 cubic metres per month	0.06409
Next 500 cubic metres per month	0.05994
Over 1,000 cubic metres per month	0.04634
Minimum charge per month	\$ 7.50
Disconnect & lock metre charge	\$ 15.00
Reconnect charge	\$ 15.00

Rate 108 - General Firm Service

	<u>\$ per cubic metre</u>
Commodity Rate:	
First 10,000 cubic metres per month	0.20002
Next 20,000 cubic metres per month	0.19414
Next 70,000 cubic metres per month	0.19154
Next 400,000 cubic metres per month	0.18799
Minimum charge per month	\$ 10.00
Disconnect & lock meter charge	\$ 15.00
Reconnect charge	\$ 15.00

Atikokan Community Profile

Late Payment Charge:

When payment has not been made by the due date shown on the bill (12 days after date of mailing) the amount plus five percent (5%) penalty charge shall apply.

PROPANE

Propane is distributed through the Bait Shop and the Willie Wiggle Bait Farm.

WOOD

Some residents supplement their heating costs with wood. Most residents use wood primarily for fireplaces and cottages.

MUNICIPAL SERVICES

WATER SUPPLY

Water in the Township is supplied by the Atikokan River System and is pumped from above Little Falls on the east side of town. Service is available to all areas except Highland Park. The system has a daily pumping capacity of 900 gallons per minute with three pumps operating. Most of the time only one pump is operating, with the other two in reserve to handle increased demand. Peak consumption usually occurs at noon and between 4:00 p.m. and 7:00 p.m.. Pressure is ninety pounds per square inch at the pump house.

SEWAGE SYSTEM

The community is served by a modern sewage treatment plant located at Mackenzie Avenue and Rooney Street. It has been designed to intercept all existing septic tanks and send the effluent to the sewage treatment plant. The system is capable of handling a population of 6,000. Top capacity is calculated at 6,500 plus.

The rate of flow per day is .9 million gallons, peak flow approaching 3 MGPD.

The plant is capable of handling a population increase of about 50%. Therefore, the system will be able to service almost 10,000 people with the addition of more settling tanks. The only by-product of the treatment process is a form of sludge used as a fertilizer.

Atikokan Community ProfileANNUAL WATER AND SEWAGE RATES FOR RESIDENTIAL CONSUMERS

	<u>Water</u>	<u>Sewer</u>	<u>Total</u>
Each single residence	224.20	90.75	314.95
Extra charge for each apartment in a residential home	224.20	90.75	314.95
Additional charge for private residential swimming pool installation	100.00	40.00	140.00
<u>Rooming Houses</u>			
Residential - Room 3-7	230.52	90.75	321.27
Room 8-10	322.65	181.50	504.15
Room 11 or more	414.80	181.50	596.30
Commercial - Room 3-7	307.35	169.43	476.78
Room 8-10	430.20	338.85	769.05
Room 11 or more	553.05	338.85	891.90
<u>Apartment Buildings</u>			
Each apartment will be classed as a single dwelling and charged at the single residential dwelling rate	224.20	90.75	314.95

ANNUAL WATER AND SEWAGE RATES FOR COMMERCIAL CONSUMERS

	<u>Water</u>	<u>Sewer</u>	<u>Total</u>
1. Shop 1-5 employees	210.00	93.35	303.35
6-10 employees	315.00	93.35	408.35
11-20 employees	420.00	161.70	581.70
over 20 employees	840.00	298.40	1138.40
2. Beauty Shop	262.50	110.44	372.94
3. Public Garage	506.90	230.04	736.94
4. Service Station	337.85	161.69	499.54
5. Gaseteria - no stalls	169.05	93.35	262.40
6. Hotels - 1 - 15 units	270.34	108.18	378.50
over 15 units	360.36	163.60	523.96
7. Motels - 1 - 9 units	225.19	80.44	305.63
- 10-15 units	270.34	108.16	378.50
- over 15 units	360.36	163.60	523.96
8. Stores	1181.25	366.73	1547.98

Atikokan Community Profile

9.	Eating Establishments			
	seating 1-15	259.88	93.35	353.23
	seating over 15	415.80	161.69	577.49
10.	Community Centre (e.g. - Native Friendship Centre)	660.00	245.00	905.00
11.	Clubrooms - licensed (non comm)	371.72	190.53	562.25
	- licensed (comm)	371.72	205.43	577.15
12.	Halls that rent out	148.76	114.79	263.55
13.	Churches and church halls			
	- that do not rent out	76.23	80.18	156.41
	- that rent (res)	148.76	104.86	253.62
14.	Car Wash per stall (flat charge)	93.56	298.38	391.94
15.	Laundries per washing machine (flat charge)	70.00	298.38	368.38
16.	Hospital per bed (flat charge)	60.00	525.00	585.00
17.	Schools per classroom (flat charge)	90.00	425.00	515.00
18.	Cement Plant	800.00	325.00	1125.00
19.	Proboard of Canada	1500.00		1500.00
20.	Ice Dispensing Business	125.00	115.00	240.00
21.	Minnow Retail	50.00		50.00
22.	Malls			
	1-5 businesses	750.00	275.00	1025.00
	6-10 businesses	1250.00	275.00	1525.00
	11-20 businesses	1500.00	525.00	2025.00
	over 20 businesses	2000.00	525.00	2525.00

Each additional living quarters with facilities in any of the above establishments shall be charged at the residential rate.

WASTE REMOVAL

Waste removal in Atikokan is done under contract. In residential areas of the community the garbage is picked up on a once a week basis and for commercial customers, the garbage is picked up as arranged.

The method of disposal is a sanitary land fill site. A custodian supervises dumping at the site.

Atikokan Community Profile

The hours of operation at the land fill site are as follows:

Winter (November 1 to April 15 inclusive)

Monday to Friday	2:00 p.m. to 6:00 p.m.
Saturday	10:00 a.m. to 6:00 p.m.
Sunday	2:00 p.m. to 6:00 p.m.

Summer (April 16 to Oct 31 inclusive)

2:00 p.m. to 8:00 p.m.
10:00 a.m. to 6:00 p.m.
2:00 p.m. to 6:00 p.m.

Gates are locked at all other times.

ANIMAL CONTROL

The animal control officer's position is part-time and includes the operation of the dog pound, catching loose dogs and destroying dogs not claimed by their owners. He is also responsible for the capture and destruction of skunks in the area.

TELEPHONE

The Bell Canada Telephone Company provides service to Atikokan. The office in Thunder Bay handles all service requests and may be reached through a toll free line. Business customers dial 0 and ask for Zenith 30700 and residence customers dial 0 and ask for Zenith 30300.

* In 1987, Bell Canada maintained service to 1,496 residential customers, 326 business lines, 23 private branch lines and 31 coin operated public telephones.

All service is direct dial.

* Bell Canada no longer releases this information to the public.

Telephone rates

Business	\$ 14.35 per month
Private Residential	\$ 6.10 per month
Residential Touch Tone Lines	\$ 2.55 per month

Above rates do not include set rental.

Atikokan Community Profile

MEDIA

Major Newspapers - Circulation

Atikokan Progress	- a locally published weekly paper, printed in Fort Frances - available on news stand
Winnipeg Free Press	- available on news stand
Thunder Bay Times-News	- available on newsstand
Toronto Globe and Mail	- home delivery available
Fort Frances Times	- available on newsstand - available on newsstand

BROADCASTING

Television

Channels available in Atikokan include:

<u>Ch. #</u>	<u>Station</u>	<u>TV Service</u>	<u>Ch. #</u>	<u>Station</u>	<u>TV Service</u>
2		CKPR Thunder Bay	23		Much Music
3	CBS	WJBK Detroit	24		TVO French
4	CTV	CHFD Thunder Bay	25		CBC Newsworld
5	CBC	CBC Winnipeg	26		Weather Now
6	NBC	WDIV Detroit	27	YTV	Youth TV
8	CTV	CHAN Vancouver	28	TSN	Sports Network
9	ABC	WXYZ Detroit	30		Vision TV
10		CHCH Hamilton	32		House of Commons
11	TVO	TV Ontario	34		Ontario Legislature
12		CITV Edmonton	36	CHSN	Cdn. Home Shopping
13		Community TV			

Cable in Atikokan is available for \$20.97 per month. Quality of the reception in the community broadcasting system is excellent.

Radio

The Canadian Broadcasting Company (CBC) broadcasts at 1490 AM and 90.1 FM with CBQ from Thunder Bay giving regional coverage in the mornings and CBC Winnipeg during the rest of the day. CFOB Northwest Radio on 1240 AM serves Atikokan from Fort Frances.

Atikokan Community Profile

TRANSPORTATION

External transportation is provided by means of Highway 11 and one of three air strips located in the area. Regularly scheduled bus, rail or air transport is available to other northern centres while private car or chartered air service may be used for travel to other areas. The car is the chief mode of internal transportation in the community. No public transit system exists but two taxi companies are available.

Air Service

The township of Atikokan is served by the Municipal Airport which is located within 5 km of the town's core.

Runway:

one - 100 ft. x 3 500 ft. paved

Aircraft Handled:

NorOntair - passenger & freight, seven days a week
Private Flights - by local businessmen

Highways

Highway 11 (east - west) Alternate Trans-Canada Route
Highway 11B (north - south) leading into Atikokan
Highway 622 (north - south) leading to Ignace, Dryden
Highway 623 (north - south) leading to Sapawe (Atikokan Forest Products)
Highway 17 Trans-Canada to Thunder Bay, Ignace, etc.

Description of Highways

Generally good condition, most have been recently upgraded.

Truck Transport

Burky's Transfer
Lakehead Freightways

The following rates were provided by Lakehead Freightways for every 50 pounds of cargo, from Atikokan to:

Fort Frances	\$ 17.62	Sault Ste. Marie	26.70
Kenora	\$ 20.34	Thunder Bay	17.62
Winnipeg	\$ 20.33	Toronto	45.62

Volume shipping rates are negotiable.

Atikokan Community Profile

Parking: Three large parking lots are centrally located. These areas are restricted with no over night parking allowed.

Sewer: Twenty miles

FINANCIAL SERVICES

Financial services in Atikokan consist of three banks, each with one branch: The Canadian Imperial Bank of Commerce, The Royal Bank of Canada, and the Toronto-Dominion Bank.

Atikokan Community Profile

Passenger Bus Service:

Grey Goose Bus Lines with daily departures from Atikokan to major centres with regular stops made enroute.
\$ 26.70

<u>Centre</u>	<u>Departure</u>	<u>* Fare (one way)</u>
Fort Frances	11:20 a.m.	\$ 12.15
Thunder Bay	8:05 p.m. 9:40 a.m.	\$ 16.10
Winnipeg	6:20 p.m. 11:20 a.m.	\$ 38.25

* There is a discount on the fare for a return ticket and for students and seniors.
NOTE: When time changes in October and April, times of arrival and departure change.

Parcel Express

<u>Destination</u>	<u>Weight</u>	<u>Cost</u>
Fort Frances	0-5 lbs	\$ 5.00
Thunder Bay	0-5 lbs	\$ 5.00
Winnipeg	0-5 lbs	\$ 6.00

Parcel Service:

Purolator Courier
United Parcel Service

Railway Canadian National Railways (freight only)

<u>Taxi</u>	Bish's Taxi	2 car service	phone 597-6686
	Roy's Taxi	2 car service	phone 597-6727

Type and Condition of Streets and Roads in Atikokan

Asphalt Concrete (hot mix)	32.55 km
Earth Grade and Drained	.20 km
Gravel-Stone (primed and oiled)	8.38 km legally open (suburban) .32 km
Light Bituminous (mulch, chip seal)	<u>2.32 km</u>
Total miles of roads	43.77 km

Width of Roads: Varies; four blocks of Main Street is wide (four lanes) while the remaining roads are two lane.

Road Construction: All streets in the downtown core have been recently upgraded.

Cleaning of Streets: Street sweeper truck

SECTION IV

MUNICIPAL SERVICES

Atikokan Community Profile

ATKOKAN CHAMBER OF COMMERCE

This organization's membership is made up of owners, proprietors and employees of the Atikokan business community.

Vital to the community the Chamber gives support to local organizations, groups and individuals who undertake social and economic projects and lobbies local government concerning business issues. As well, they organize educational and social programs for members, communicate with other Chambers of Commerce, exchange ideas and information, and present items of local importance to the provincial government at Queen's Park.

The Chamber of Commerce answers inquiries about the Atikokan area and sends out Atikokan brochures. The organization also participates in local events such as Sports Days, the Christmas Parade and Trade Shows.

MEDICAL FACILITIES

Atikokan's medical facilities adequately serve the community. On December 12, 1975, the new Atikokan General Hospital was officially dedicated and the move in was completed in January of 1976. This 41 bed, fully-accredited hospital is well located in the community within a kilometre or two of the majority of the population.

Six doctors assisted by nurses, lab technicians, X-ray technicians, dieticians and many part time workers staff the hospital. As well four of the doctors have their own clinic. The Atikokan Clinic is open to all citizens of the area. The hospital has two ambulance and a heliport which allows air ambulance services to be available.

Although there are no specialists established in Atikokan, specialists in many fields are available on a daily consulting basis from Thunder Bay and Winnipeg. The hospital holds specialized clinics on a routine basis.

The following are the departments which are all fully staffed and modern:

- community counselling
- laboratory
- physiotherapy
- radiology
- speech and language pathology

In May of 1986 the addition of a sixteen bed extended care wing for seniors was constructed attached to the main hospital.

SPECIAL SERVICES

Community Corrections Worker - Probation and Parole Services

The Ministry of Correctional Services operates an office handling probation and parole cases in Atikokan.

Employees include the Community Corrections Worker, and one part-time secretary.

Atikokan Community Profile

Probation orders are issued by the court, and the terms and conditions of these orders are supervised by the officer. In cases where community service orders are included on the probation order, close liaison is maintained between the officer and local organizations.

There is a very close relationship maintained between this agency, the police department, Family and Children's Services, Family Counselling Services and the medical profession.

Family and Children's Services

The Family and Children's Services (formerly known as the Children's Aid Society) with head office in Fort Frances is a very active service in Atikokan. It is a private corporation subsidized by the municipality and the provincial government with a mandate from the Child Welfare Act for children under sixteen years of age.

Employees include two social workers (one full time and one part time), and one part-time secretary. This staff is responsible for servicing Atikokan and the Seine River Reserve. All other reserves are served by the Fort Frances office.

The Family and Children's Services is an agency primarily involved in preventative work in the community. Their services include:

- counselling when children are involved
- acting as a Foster Care Agency when families are unable or incapable of taking care of their own children
- giving counsel during a teenage pregnancy - to the girl involved, in order that she may plan for the child and herself, and to the family (if appropriate) and with the father (if appropriate).

The agency works co-operatively with the probation office, doctors, police and community counselling.

Home Care Program

In 1980 a Home Care Program was established to aid patients needing medical attention at home. A registered nurse makes house calls to change dressing and to do a general check up.

Northwestern Health Unit

The Public Health Nurse reaches the community through home visits, schools visits, special classes, special clinics and talks to special interest groups. Public Health Nurse Services are eligible to every citizen in the community.

Other Social Agencies

Alcohol Anonymous
Canadian Red Cross Society

Atikokan Crisis Centre
District Social Services

Crime Stoppers
Rainbow Day Care Centre

Atikokan Community Profile

EDUCATION

Public School System

Elementary Schools: Hemlock Avenue
Saturn Avenue

Secondary Schools: Atikokan High School

Separate School System

Elementary School: St. Patrick's Separate School

Alternate Learning Program

The Alternate Learning Program deals with students between the ages of 13 and 18. These students are referred by the Family and Children's Services

The program offers a combination of academic and co-op for the students with special learning needs. The students have academic studies in the morning and in the afternoon work on odd jobs or work on co-op placements for local businesses.

Rainbow Day Care Centre

This facility was opened May 15, 1989 and operates from 7:00 a.m. to 6:00 p.m. five days a week. Programs offered include "Toddlers" (18 months to 2 1/2 years of age), "Preschoolers" (2 1/2 to 5 years of age) and "School Age" (6 to 12 years of age).

Confederation College of Applied Arts and Technology

In 1980 Confederation College of Applied Arts and Technology (Thunder Bay) opened a branch of the college in Atikokan. Adult extension and general interest courses are offered by this institution.

The following part-time evening programs are offered:

Assessment for Nurses
Basic Photography
Computer Training
- Wordperfect Version 5.1
- Introduction to Computers MS-DOS
- Introduction to Bedford

Effective Supervision - Communication
Introductory Accounting
Introduction to Investments
Language Workshop
RNA Aseptic Procedures
Secretary Skills Update

Note: Courses offered are dependent upon student enrolment. Ten students are required per course.

* Full-time training programs sponsored by Atikokan Community Training Committee and the Canada Employment Centre are:

Carpentry General - advanced
Commercial Refresher

Cutters and Skidders
Retail Merchandising

Atikokan Community Profile

Additional courses offered are Automotive and Electronic, and Basic Hydraulics. These courses are sponsored by the Ministry of Skills and Development.

A two year diploma program is now offered at the college. This year a two year diploma is being offered for a social service worker. Next year a two year diploma will be offered in Business Administration if there is sufficient student enrolment.

For further information contact

Confederation College of Applied Arts and Technology
P. O. Box 778
Atikokan, Ontario
P0T 1C0
Giselle McCarthy
Phone: 807-597-6294

Lakehead University

Offering a variety of off campus degree courses as well as post graduate programs, Lakehead University presents its regular curriculum as well as responds to community interests. Although Atikokan does not have its own office at this time, information regarding courses, tuition, etc. is available through the following contact person:

Mrs. Doris Brown
Office Campus Representative
P. O. Box 1478
Atikokan, ON
P0T 1C0
Phone: 807-597-4406

Contact North

Contact North allows for courses or programs to be delivered by an educational institution when the learner is separated by either distance or time from the instructor. Contact North operates a network of electronic classrooms located in communities across Northern Ontario. In Atikokan a classroom and access point is equipped with a telewriter, computer conferencing, fax machine, convenors (telephone link) and video equipment (VCR and TV).

Any university, college or secondary school in Ontario can utilize the network for delivery of courses and conducting meetings. Other non-profit groups may also use the network for educational and training activities.

Confederation College of Thunder Bay, Lakehead University and Sault Ste. Marie College send a list of courses for the fall, winter and spring terms.

Currently students are working towards the following diplomas through distance education:

Business Administration
Core Business
Developmental Social Worker
Multidisciplinary Gerontology Certificate
Post-Certificate Working with the Aged

Atikokan Community Profile

This year Sault College has offered a three year diploma course for the Native Resource Technician Program.

For further information contact

Contact North
Clark Street
Atikokan, Ontario
POT 1C0
Jeanne Bailey
Phone 807-597-6110

Employment Learning Opportunities (ELO)

The ELO is a federally funded training program through the Canada Employment and Immigration Commission. This program provides training for severely employment disadvantaged people who are sixteen years of age and over. Training consists of addressing the person's disadvantage whether it be attitudinal, cultural, work and/or educational in order to develop proper attitudes towards working.

The ELO helps their students to upgrade their educational level and provides life skills training (i.e. problem solving, health consciousness) and helps to train students who are interested in a specific skill. Emphasis is on direct skill training in order to enhance the student's self image.

As well, the ELO assists with employment training which involves giving advice on writing resumes, interviews, retaining jobs and how to look for further training if their training requires certification.

The ELO is planning to manufacture furniture in the distant future.

Independent Learning Centre

This centre offers a variety of high school correspondence courses to people in the Atikokan area. Courses are available under the auspices of the high school guidance counsellor. The courses are available from September to June.

Northwest Enterprise Centre

The Northwest Enterprise Centre is a leader in the development, marketing and delivery of non-traditional education, primarily aimed at improving the performance of existing and prospective small business owners.

The centre employs a team of experts in market research, economic development, planning, computerization, municipal and small business management, program development, accounting, marketing and advertising.

The centre offers several innovative programs and each one is structured as a series of seminars and on-site visits mediated by an advisor. An important part of the seminars is the utilization of professional speakers and business people proficient in the practical application of the issues.

Atikokan Community Profile

Quetico Centre

In 1958 Quetico Centre was started. Its founders saw the need for Northwestern Ontario to have a meeting place for learning, training, planning, solving problems and capturing opportunities.

The centre is a residential continuing education centre engaged in shaping the future by helping people anticipate and respond constructively to change.

The centre offers seminar and conference services, leisure learning programs, strength development seminars, organization effectiveness, innovative leadership seminars, youth leadership programs and heavy equipment operation training.

Some of the recreational facilities include an indoor pool, sauna, billiards, a gym for badminton, volleyball, basketball, and hydrafit equipment. A few of the outdoor activities include tennis, canoeing, cross-country skiing and broomball.

Quetico Centre is a world class conference centre whose facilities are modern, well designed and beautifully located on the shores of Eva Lake.

SECTION V

TOURISM & RECREATION

Atikokan Community Profile

TOURIST ATTRACTIONS

Atikokan Centennial Museum and Historical Park

The museum gallery and archives is located in the civic building on Burns Street. The historical park log cabin offers permanent exhibits of the fur trade, early pioneers, mining, logging and railway history from the museum's private collection. Some of the exhibits presented at the Historical Park are the Shevlin-Clarke locomotive, alligator tugboat and a Euclid dump truck.

The museum gallery hosts arts, crafts and natural science exhibits as well as providing workshops and other related activity. Tours of the historical park or museum gallery can be arranged by calling 597-6585 for an appointment. The historical park is seasonal being open from late June to early September yearly. However, the large outdoor exhibits are open to the public year round.

Atikokan Ski Hill

The ski hill offers five challenging runs, T-bar lift and two rope tows. The hill is the highest vertical between Thunder Bay and the Rockies.

Atikokan Sports Days

The Atikokan Sports Days is organized by local townspeople. This yearly event involves a week of fun-filled activities for all ages. Activities include volleyball, golf, loeball and T-ball tournaments, fish derby and fry, canoe races, street dance, teen dance, teen queen pageant, parade and fireworks. For the first time, water-cross racing which consisted of snow machines racing across lake surfaces was held.

Bending Lake Road, Highway 622

The new opening of the Bending Lake Road, Highway 622 is expected to increase tourism and business contact between Atikokan and Ignace. The travel time between Atikokan and Ignace is reduced from four hours to less than two. The new highway should also encourage more travellers to Atikokan from Dryden, Ignace and Sioux Lookout.

As well, the road opens up previously inaccessible timber stands and access to rich granite deposits and a greenstone belt with precious and base metal findings.

Little Falls Community Centre, Curling Club and Golf Course

A six sheet curling rink, licensed dining lounge, sauna, pro shop and rentals compliment our challenging golf course which has been rated by golfers as one of the finest in Northwestern Ontario.

Atikokan Community Profile

Quetico Provincial Park

Atikokan is situated in the heart of one of the northwest's most breathtaking and scenic vacation land. Quetico Provincial Park, consisting of 1780 square miles of unspoiled nature, lies between the Township of Atikokan and the international border of the United States. Crystal clear lakes, streams, and smooth rivers flowing past rugged cliffs are all part of its natural make up. The modern well-planned community of Atikokan is fully equipped to serve the needs of the tourist and citizen alike. New tourist attractions development and community improvements are a top priority of the local Tourism office.

Quetico's recreational potential can be enjoyed in many ways. Activities such as canoeing, skiing, camping, fishing, snowshoeing, backpacking, swimming and nature photography attract many visitors to the campsites and waterways of this park's vast interior. An increasing number of visitors come to Quetico Park to use the services of the local canoe outfitters who specialize in providing gear and guided trips for the canoeists.

In addition to the wilderness of the park interior, there is an organized camping recreation area at French Lake, called the Dawson Trail Campground. Open lawns for picnics, playground equipment, excellent swimming and day use facilities makes this a popular vacation spot in summer months. Three interpretive trails, each about one half mile long, are located near the main campground road.

Restricted Crown Land Camping Program

The Atikokan area has "regulated areas" or "green zones" in which non-residents may use the green zone areas for the day but for overnight accommodation they must stay at a registered tourist accommodation facility.

The exception to this will be canoe parties who are tripping and in the course of their trip, find themselves at a campsite within a regulated area. A tripping party may use a campsite within the regulated area if they have obtained a letter of permission to do so from the Atikokan Ministry of Natural Resources District Office and have obtained the necessary crown land camping permits.

Non-residents who camp on crown land outside of the regulated areas and rent a camping unit (equipment used for the purpose of outdoor sleeping accommodation, i.e. tent or houseboat) from a registered tourist outfitter will not require Crown Land Camping Permits.

Any non-resident who is eighteen years of age or older and who has not rented a camping unit from a registered tourist outfitter will require Crown Land Camping Permits. These permits cost \$3 per person, per night.

Atikokan to Minaki Waterway

A feasibility study has given favourable results for implementing a recreational boating route between Atikokan and Minaki in Northwestern Ontario. This 450 km "Voyageur Heritage Waterway" will encompass the Atikokan, Seine, Namakan, Rainy and Winnipeg Rivers, Rainy Lake and Lake of the Woods. The Atikokan terminal site is proposed to be located on a bend in the Atikokan River at Main Street with close proximity to the museum and downtown area.

The committee of this project plan to achieve a proposed implementation by 1991.

Atikokan Community Profile

Rainy River District Tourism Corridor

This corridor will involve promoting as a package, the facilities, events and attractions in each participating community in the Rainy River District. As a promoted region the communities have the potential to attract and maximize the benefits from the touring and destination oriented tourist. The tourism corridor concept is expected to be implemented in 1990.

Regional Snowmobile Route

Atikokan and several other communities in Northwestern Ontario are working together to promote the snow machine trails which connect their communities.

Each community has an active snowmobile club which has snowaramas, rallies and events which attract snowmobilers within and outside the region. Therefore, the winter vacationers can enjoy several snowmobiling activities in the circuit.

The regional snowmobile route is expected to be implemented in 1990.

White Otter Castle

In 1914, Jimmy McQuat built a three storey level castle from massive red pine. The castle which is situated 64 km north of Atikokan on White Otter Lake has been recognized as an historical site. A 1.5 million dollar restoration of the castle is planned in order to preserve the castle's historical value. Other improvements include the establishment of a campground north of the castle and a boat dock. As well, photos and stories will be displayed at the castle along with self guiding tours around the castle.

The completion date of the project is expected to be 1992.

Atikokan Mining Theme Park

Atikokan's history revolves around the start up of iron mining in the late 1940's and 1950's. Currently, Atikokan is involved in a conceptual marketing study to determine the feasibility of a mining theme park on the property (approximately ten thousand acres) formerly of Steep Rock Resources Inc.

The expected implementation date of the mining theme park is 1992.

Hotel, Motel Accommodation

<u>Hotels:</u>	Atikokan Hotel	807-597-2533	23 units
	Steep Rock Inn	807-597-2727	11 units
<u>Motels:</u>	Caribou Motel	807-597-6888	9 units
	Pines Motel	807-597-6767	8 units
	Radisson Motel	807-597-2766	30 units
	White Otter Inn	807-597-2747	30 units

Atikokan Community Profile

TOURIST ACCOMMODATIONS AND OUTFITTERS

<u>Resort or Outfitter</u>	<u>Location</u>	<u>Sites</u>	<u>Facilities</u>
Birch View Resort	Niobe Lake	3 cabins	rooms, dining, boats, bait
Bon A' Venture Resort	Niobe Lake	4 cabins	housekeeping, boat rentals, beach, hunting
Browns' Clearwater West Lodge	Clearwater West Lake	10 cabins 25 sites 4 outposts	store, dining room, housekeeping, boat rentals, guides, sauna, beach, fitness facilities
Sunset Country Outfitters	Nickleby Lake	10 cabins	store, ice, beach, boat rentals, housekeeping
Bunnell Park Campground	Atikokan	20 sites	flush toilets, electricity, fireplaces, wood, close to golf course
Campbell's Cabins & Trading Post	Lac la Croix		complete outfitting, fly-in service, fishing
Canadian Quetico Outfitters	Eva Lake	4 rooms 1 cabin	dining room, boat rentals, housekeeping, beach
Canoe Canada Outfitters	Atikokan		canoe outfitting, plane trips, fly-in service, bear hunts
Crystal Beach Resort	Crystal Lake	34 sites 3 cabins	flush toilets, showers, store, ice, beach, septic dump
Dawson Trail Campgrounds	French Lake	135 sites	flush toilets, fireplaces, beach, hiking, shelters, playground
Eva Lake Resort	Eva Lake	9 cabins	hunting camps, dining room, complete outfitting, fishing, fly-in service
Finlayson Lake Resort	Finlayson Lake	7 cabins 30 sites	boat rentals, campsites, firewood, store, playground, bait, showers, laundry facilities
Hillcrest Resort	Duncan Lake	5 cabins	beach, housekeeping, boat rentals, guides
Indiaonta Resort	Calm Lake	6 cabins 4 rooms	dining lounge, housekeeping, boat rentals, guides, beach, store, ice

Atikokan Community Profile

McCauley Lake Resort	Little McCauley Lake	8 cabins	store, beach, boats, fireplaces, guides
Morris' Tourist Camp	Niobe Lake	7 cabins 9 rooms 8 sites	housekeeping, dining lounge, beach, canoe outfitting, deer and moose hunts, boat rentals
Camp Quetico	Eva Lake	11 cabins	flush toilets, dining room, laundry, showers, store, boat rentals, sauna, beach
Perch Lake Resort	Perch Lake	6 cabins	store, beach, boats, housekeeping
Pioneer Airways Ltd	Crystal Lake		fly-in service
Powell Lake Resort	Powell Lake	4 cabins	dining room, housekeeping, beach, boat rentals, hunting
Quetico North Tourist Services	Eva Lake		complete outfitting, gifts, gas, groceries, dining lounge
Seine River Lodge	Perch Lake	3 cabins	bathrooms, boat rentals, guides, housekeeping
Tip Top Lodge	Sandford Lake	8 cabins	bathrooms, dining room, housekeeping, hunting, fishing, boat rentals, sauna
West View Lodge	Lake Windigoostigwan		cottages, boat rentals, beach, housekeeping
Voyageur Wilderness Program	Nym Lake		outfitter, planned canoe trips for students, nature oriented.

Atikokan Community Profile

RECREATIONAL AND CULTURAL ACTIVITIES

Atikokan Entertainment Series

The Atikokan Entertainment Series is organized by a group of local volunteers who bring in family entertainment for the Atikokan area. The season for the entertainment series is from September to May and season membership is available at reasonable rates.

Past performances include the Ontario Arts Centre Orchestra, Manitoba Theatre Centre, Theatres Song Sans Sils and Murray MacLaughlin. This year's line up of performances include Loreena McKennitt, the Fort William Male Choir, Garbage Delight, Glass Menagerie, Al Simmon and the Great Lakes Brass.

Pictograph Gallery

The Pictograph Gallery displays paintings, drawings, pottery, sculptures, weaving, cards, photographs and wood furniture by local artists. The gallery is located in the lower level of the Voyageur Mall.

Parks and Recreation Program

Local industry has given more than moral support to the program and this along with the enthusiasm and effort of service clubs and individuals created the beginning of a Parks and Recreation program for the community. The function of this program is to serve the community with recreational interests. The facilities include an arena, two ball parks, indoor pool, tennis court, ski hill, outdoor rinks, serviced municipal campground, soccer field, track, cross-country ski trails, passive and active parks, and the pioneer centre. The facilities are used by the following recreational groups:

<u>Facility</u>	<u>Recreation Groups</u>
Arena	minor, high school, intermediate and old-timers hockey leagues; figure skating; ringette; broom ball; public skating
Golf Course	men's, ladies' and tournament golfing
Curling	men's, ladies', mixed, high school; numerous bonspiels
Ball Parks	men's, ladies' fastball; mixed loeball; junior loeball; T-ball
Pool	wake-up swim; businessmen's noon swim; swim fit; Red Cross lessons; Nakokita Swim Club
Pioneer Centre	A self sponsored organization where elderly people can meet, play games and spend their time constructively
Bowling	youth, men's, ladies', mixed, seniors, and developmentally handicapped leagues

Atikokan Community Profile

Atikokan Public Library

The philosophy of the Atikokan Public Library is to provide the opportunity and the means to develop and promote the educational, recreational, vocational and socio-cultural needs and interests of the community, on an individual and/or collective basis. Both print and non-print materials will be made available and accessible to the community.

The Library will obtain printed books, in fiction and non-fiction, talking books, video cassettes, films and photocopied material from other libraries across Canada or United States. The Inter-Library Loans Service is one of the most vital services offered, in that, if material is not held in the library to satisfy the informational needs of the community, the Library Board and staff are obligated to request such information from other libraries. However, it is subject to inter-library loan policies of individual libraries.

A shut-in service is available to the physically handicapped through the provision of material best suited to the needs of the patron.

Large print books and paperback book collections are located at the Public Library as well as in the senior housing complex.

The staff of the Atikokan Public Library will make visits to schools upon request with the understanding that such visits do not interfere with the daily operation of the Children's Department. Class visits to the Public Library can be arranged.

The Library implements, develops and maintains programs directed toward meeting the needs and interest of the community. It will provide individuals and organizations with materials to supplement their topics of lectures, workshops, etc. and will also compile bibliographies upon request.

Projectionist certification classes are offered upon request, although a minimum enrolment of 5 - 8 persons is required.

Photocopying services are available. Microfilm and microfiche readers are part of the equipment for public use.

Recreational Clubs

Atikokan Bowling Association
Atikokan Figure Skating Club
Badminton Club
Golf Club
High School Outers
Karate Club
Ringette Club
Snow Ho Club
Tourist Outfitters Association

Atikokan Fastball Association
Atikokan Lobbball Association
Curling Club
Guiding Association
Hockey Association
Nakokita Swim Club
Ski Club
Sunset Country Archers
Volleyball Club

Service Clubs

Canadian Legion Branch #145
Kiwanis Club
Lions Club
Masonic Temple AF & AM #668

Canadian Legion Ladies' Auxiliary
Knights of Columbus
Lionelles
Moose Lodge Branch #1672

Atikokan Community Profile

Social & Cultural Clubs

Air Cadets
ARC Industries
Atikokan Arts & Crafts Association
Atikokan Dance Club
Atikokan Hospital Auxiliary
Atikokan Ministerial Association
Atikokan Sportsmen's Conservation Club
Badminton Club
Block Parents
Brownies
Canadian Arthritis Society
C.N.I.B.
Commodore 64 Club
Crippled Children
Duplicate Bridge Club
Friends of Quetico Park
Girl Guides of Canada
Hope Rebekah Lodge
Mental Health Committee
Neighbourhood Watch
Nurse Registry
Pioneer Club
Rainy River Housing Authority
Salvation Arm
Special Education Liaison Teacher
St. John's Ambulance
Telecare
TV Atikokan Productions Studio
Volunteer Bureau of Atikokan
Women of the Moose

Churches

Church of the Good Shepherd - Anglican
Faith Lutheran Church
Full Gospel Assembly - Pentecostal
Riverview United Church
St. Michael's Ukrainian Greek Orthodox Church
St. Peter and Paul Ukrainian Catholic Church

Animal Care
Ass'n of Professional Engineers of Ontario
Atikokan Bowling Association
Atikokan Flower & Garden Club
Atikokan Little Theatre
Atikokan Native Friendship Centre
Atikokan 2 3 4 Playgroup
Beta Sigma Phi Sorority
Boy Scouts of Canada
Caland Manor Group Home
Canadian Cancer Association
Christmas Cheer Fund
Community Calendar Events
Ducks Unlimited of Canada
Fix-It Club
Friends of White Otter Castle
Heart & Stroke Foundation
Little Falls Recreation Centre
Narcotics Anonymous
Northernnares Choir
Pioneer Centre
Pictograph Gallery
Red Cross Society
Search and Rescue
Spina Bifida & Hydrocephalus
Teachers Federation
Tourist Information Bureau
Vocational Rehabilitation Services
Volunteer
Women's Resource Centre

Church of Jesus Christ of Latter Day Saints
First Fellowship Baptist Church
Jehovah's Witness
St. Andrew's Presbyterian Church
St. Patrick's Roman Catholic Church

SECTION VI

THE LOCAL ECONOMY

Atikokan Community Profile

ECONOMIC BASE OF ATKOKAN

Land Development

There are 132 square miles of land within the Atikokan boundaries which is being developed under four general headings:

- industrial and commercial
- residential
- recreational
- conservational

A large percentage of this land remains in a natural state with Steep Rock Lake mining operations and the urban town site being the major land users. Both of these are located in the northern half of the municipality. Recreational uses are generally located in conjunction with the river, although some parks are located in residential areas.

Land Use	- Residential	55.3 %
	Heavy Industrial (excluding mining operations)	0.6 %
	Recreational	9.6 %
	Land in Natural State	34.5 %

Natural Resources

Atikokan's location in a vast wilderness with abundant natural resources has provided considerable wealth to the whole region. The important resources include lumber, mineral deposits and fur. In addition the attractiveness of the area attracts thousands of visitors every year.

The economy of Atikokan is closely linked to the success of these natural resources directly employing the majority of the work force.

Mining

The Atikokan area has been actively explored for gold, base metals and iron since the late 1800's. Currently the area holds strong potential for gold deposits and potential for base metal exploration. There is a large low grade iron ore deposit at Bending Lake, 64 km north west of Atikokan. Development of this ore body seems unlikely for the foreseeable future given the present demand for iron ore.

Listed below are well known mines prominent in Atikokan's history:

Atikokan Gold Mines	gold
Bergman Occurrence	gold
Caland Ore	iron
Fern Elizabeth Mine	gold
Harold Lake Mine	gold, iron
Independence Mine	gold
Steep Rock Iron Mines	iron
Tip Top Copper Mine	copper

Atikokan Community Profile

The following companies are conducting mineral exploration in the area:

Atikokan Gold Corporation
Falconbridge Ltd.
Kap Resources Ltd.

Grand Oakes Resources Corp.
Fern Elizabeth Exploration Ltd.
Societe Minere Mimiska Inc.

Comments by Exploration Companies Active in the Area

Ovalbay Geological Service Inc. - Various companies are carrying out grass roots to advanced stage exploration programs. There is excellent potential in the area for gold exploration.

Falconbridge Ltd. - We are presently diamond drilling on the Hammond Reef property and exploration work will be continued in the future.

Fern Elizabeth Gold Exploration Ltd. - Fern Elizabeth Gold Exploration Ltd. has optioned the Fern Elizabeth property to Mimiska Inc. but has ongoing exploration on other properties.

Société Minere Mimiska Inc. - The company is planning underground exploration on the Fern Elizabeth property within the next year. They are also actively exploring other sectors on the property where they have encountered favourable gold mineralization.

Forestry

Logging is an important part of the local economy. The district is divided into four management units. These are the Sapawe Crown Management Unit, the Boise Cascade Management Unit, Quetico Park Management Unit (which is unlicensed), and the Flanders Management Unit. Aside from Quetico Park, the units are managed on a sustained yield basis.

The wood from these management units goes to three companies. These are Boise Cascade Canada Limited, Atikokan Forest Products Limited and Proboard Ltd. with their mills located in Fort Frances, Sapawe and Atikokan, respectively.

<u>Wood</u>	<u>Company and Location</u>	<u>Species of Trees</u>
Pulp and Paper	+ Boise Cascade Canada operation, wood goes to Fort Frances mill	* coniferous: jackpine, black & white spruce, red & white pine, fir, tamarac, cedar, balsam
Lumber, Timber	+ Atikokan Forest Products mill at Sapawe + Nickel Lake Lumber	jackpine, spruce white pine
Wood Chips	+ Atikokan Forest Products mill at Sapawe	slats from jackpine & spruce
Particle Board	+ Proboard Ltd mill in Atikokan	poplar and birch
+ Individual operators cutting logs used for railroad ties in Thunder Bay.		

Atikokan Community Profile

Agriculture

While isolated farming communities do exist, on the whole the soils characteristic to Atikokan are too shallow, sandy and rocky to support most farming operations.

Snow Lake Fish Farms

A local entrepreneur has started a fish farm raising brook trout, rainbow trout and salmon. The farm is in the Caland Ore pit, 5 km north of Atikokan. The lake is approximately 250 acres and sterile with very little algae. As well, there is no predatory pike, bass or natural disease in the lake.

This entrepreneur feels the area has vast aquaculture potential. Currently, he has 6.5 metric tons of fish. However, the capacity of the farm this year is 25 metric tons. He plans to market the fish to Kemp Fisheries, local grocery stores and grocery chain stores in the surrounding area. He also feels there is a large open market for salmon products in the mid-west of the United States. There are plans to grow char at the end of the summer in 1990.

Sportsmen's Conservation Club Fish Farm and Hatchery

In the spring of 1989, the Atikokan Sportsmen's Conservation Club hatched 200,000 walleye eggs. The walleye fry were placed in Bewag Lake which contains no predators like perch or bass. In the spring of 1990, the club plans to hatch approximately 1 million walleye eggs and place half of the walleye fry in Bewag Lake. The rest will be placed in an experimental pond and once the fish are approximately 6 cm then they will be transferred to a specified lake. The survival rate is expected to be greater through the latter process. The Atikokan Sportsmen's Conservation Club and the Ministry of Natural Resources will be placing the walleye in the surrounding lakes in Atikokan to replenish the fish population. In three years the Ministry of Natural Resources will test the lakes for the survival rate of the walleye.

Fishing (Sport)

Of the nearly one hundred and thirty lakes in Quetico Park, five are so deep and so infertile that lake trout is the only fish specie reported. Sixty-seven lakes are deep enough to contain lake trout and have adequate areas for walleye, northern pike and bass. The remainder of the lakes contain only warm water species.

Common Lake Species

<u>Sport Fish</u>	lake trout, northern pike, small mouth bass, walleye
<u>Coarse Fish</u>	lake whitefish, lake herring, white sucker, yellow perch, rock bass, green sunfish
<u>Minnows</u>	shiners, bluntnose, Iowa darter, Johnny darter, log perch

There are seven species of sport fish, sixteen species of coarse fish and twenty-three species of minnows in the Atikokan area.

Atikokan Community Profile

Trapping

There are approximately one hundred trappers in the Atikokan area. A high percentage of trappers are natives mainly from the Lac La Croix Reserve and the Seine River Reserve. The remainder of trappers reside in the community. These trappers work approximately fifty trap lines. Very few of the above trap on a full-time basis. While some trap and hunt for a hobby, most consider the work as a seasonal winter job.

The average annual income for trappers in this area is between \$3,000 and \$4,000.

<u>Types of Fur</u>	<u>Length of Season</u>
Beaver	October 5 - April 22 in the following year
Otter	October 5 - April 22 in the following year
Bobcat, lynx, wolverine	October 25 - the last day of February in the following year
Mink	October 15 - December 31
Muskrat	October 25 - May 21 of the following year
Fisher, marten	October 25 - the last day of February in the following year
Coloured fox (all red fox)	October 25 - the last day of February in the following year
Grey fox, red squirrel, weasel	October 25 - the last day of February in the following year
Coyote, timber wolf, skunk	no closed season

All trapping of beaver is on a quota basis, set by the Ministry of Natural Resources District Office. These fur bearers must be sealed or stamped before being sold by the trapper.

Atikokan Community Profile

OTHER SERVICES

Housing

Residential development in the Township of Atikokan has occurred in stages from the downtown core to Don Park, Lone Pine, Dunbar Heights to Hillcrest.

Housing Supply

Housing	1,718
Apartments	126
Mobile Homes & Lots	97

The majority of dwellings in Atikokan (88%) are single family residences, while few (6%) are apartment units.

Conventional apartments other than CMHC and senior citizen complexes are non-existent in Atikokan. The fifteen units which are located outside of the government-assisted units, consist of suites in private homes or above stores in the downtown area.

There are very few vacant lots for new home construction. Housing units are available through local real estate agencies and private sellers.

<u>Building Permits Issued - 1989</u>		<u>Breakdown of \$ Value</u>	
New family dwelling	20	Residential	\$1,362,300
Renovations/additions/garages	35	Commercial	347,000
		Institutional	<u>1,185,000</u>
Total			2,894,300

Housing Costs

<u>Typical Units</u>	<u>Area</u>	<u>Price Range</u>
2 - 3 bedroom, no basement	Don Park, Lone Pine	\$ 7,000 - \$ 35,000
2 - 3 bedroom, with basement	Don Park, Lone Pine	\$ 30,000 - \$ 65,000
Older 3 bedroom, with basement (1950's)	Dunbar Heights	\$ 55,000 - \$ 85,000
New 3 bedroom, with basement	Hillcrest	\$ 70,000 - \$ 150,000

Included in housing are homes to rent, which are somewhat rare in Atikokan.

Prices for home rentals are usually in the \$300 - \$350 per month range for 3 bedroom, with basement (20 years old); newer homes \$ 360+ per month as well.

Recently, the Municipal Non-Profit Housing Corporation was formed. Fifteen family units and twelve senior citizens units are proposed for 1990.

Atikokan Community Profile

Apartment Rentals and Costs

<u>Housing Project</u>	<u>Description of Unit</u>	<u>Rental Rate</u>
*Senior citizens	1-2 bedroom, kitchenette, living-dining, bath, utilities included	Rent geared to income, 25% of income and market rent.
Canada Mortgage & Housing (Elmcrest Terrace)	2, 3, 4-bedroom, living room, bath, kitchen, water included. Other utilities charged to tenant	min \$ 150 - max \$ 300
Private home basement apartment or suites	1-bedroom, kitchen, living room	\$ 300 - \$ 350/month
Exception to the above	Depending on facilities	more or less than \$200 per month

* Senior Citizen Housing (rent geared to income)

Housing is available for senior citizens at rents related to the individual income level. Eligible seniors are those persons over the age of sixty who apply either to the local housing manager or the housing authority (Ontario Housing Corporation).

Atikokan Community Profile

INDUSTRY AND BUSINESS DIRECTORY

Atikokan Area (597 exchange)

Primary and Secondary Industry

Forestry

Atikokan Forest Products Limited	929-2512
Atikokan Logging Supplies	3904
Boise Cascade of Canada Limited (pulpwood)	274-7743
Proboard Ltd. (particleboard)	6921
Timber Contractors: Anderson Bros.	2414
Boyda, Glenn	4421
Hampshire, Doug	2830
Johnson, Ken	2497
K B J Logging	4516
McQuaker, Norm	2416

Industrial Supplies/Drilling

Calman Steel Limited	6059
Ontario Drilling Supply	2300
R. C. Moffatt Supply Limited	6060 or 6946
Thunder Bay Bearings Limited	4388

Manufacturing

Quality Classic Replicars (Canada) Inc.	2173
---	------

Power Generation

Ontario Hydro	1110
---------------	------

Construction and Related

General Contractors

Atikokan Ready-Mix	4326
Bates General Construction	4574
Bill Dutka Contracting	6227
Lockman Contracting	2052
Redland Construction	6494
Tramin Ltd	5595
Zeretin Technical Services Ltd	4361

Building Contractors

Armstrong Bros.	3977
Carl Hensrud Construction	2263
Mercer Building	1419
Sanders Block and Brick Work	6148

Atikokan Community Profile

Electrical Contractors

McMullen Electric Limited	2673
F. R. Quinn Limited	6363
Soren Stricker Radio & TV Repair	2577

Lumber Dealers

Do-It Centre	6559
--------------	------

Plumbing & Heating Contractors

Atikokan Central Plumbing & Heating Ltd.	2133
John Krishka Plumbing & Heating Ltd.	4451
Ken Cain Plumbing & Heating	4259

Utilities

Bell Canada	Dial "0" - ask for Business Officer
Atikokan Hydro	6600
ICG Utilities Limited	6661
Norwont,	6050

Transportation

Air

Atikokan Aero Service	6086
Lac La Croix Quetico Air Services	485-2441
NorOntair	6667

Bus

Grey Goose Bus Lines	6225
Quetico Bus Lines	6095

Rail

Canadian National Railways	6726
----------------------------	------

Rent-A-Car

Avis Rent A Car	2858
-----------------	------

Taxi

Bish's Taxi	6646
Roy's Taxi	6727

Transport Service/Moving/Storage

Burky's Transfer	2268
Lakehead Freightways Limited	2425

Trucking

Aggasiz Transport Inc	929-7191
Carl Hanlon Trucking	2497
Don Alexander Trucking	6381

Atikokan Community Profile

Peter Vinet Trucking	2594
Robert Gosselin Trucking	2139
Ron Bang Trucking	4437
Tom Marr Trucking	6443

Finance and Real Estate

Banks

Canadian Imperial Bank of Commerce	2742
Royal Bank of Canada	6905
Toronto-Dominion Bank	2706

Real Estate

Bainbridge Agency Limited	2426
Rees Realty Corporation	2877
Re/Max Harbourview Realty	2403

Insurance

Bainbridge Agency Limited	2426
Gillon's Insurance Brokers	2152

Hospitality Inventory

Entertainment

Arena	6458
Atikokan Native Friendship Centre	1213
Atikokan Progress and Printing	2731
Hoppy's Drive-In	2587
Library	4406
Little Falls Recreation Centre	6638
Movie Hut	6977
Norwont	6050
Park Theatre	6223
Parks & Recreation	6932
Pictograph Gallery	4344
Swimming Pool	6478
TV Atikokan Productions Studio	4430
Video Vision	1356

Accommodation

Atikokan Hotel	2533
Pines Motel	6767
Radisson Motel	2766
Steep Rock Inn	2727
White Otter Inn	2747

Atikokan Community Profile

Outfitters and Resorts

Birchview Resort	929-2461
Bon A' Venture Resort	929-2421
Browns' Clearwater West Lodge	2884
Bunnell Park Municipal Campground	6932
Camp Quetico	929-2266
Campbell's Cabins & Trading	485-2441
Canadian Quetico Outfitters Limited	929-2177
Canoe Canada Outfitters	6418
Crystal Beach Resort	929-2231
Crystal Lake Lodge	929-2471
Dawson Trail Campgrounds	929-2471
Eva Lake Resort	929-2451
Finlayson Resort	2103
Hillcrest Resort	929-3441
Indiaonta Resort	947-2581
Lac La Croix Quetico Air Service	2883
McCauley Lake Resort	6187
Morris' Tourist Camp	929-2341
North Country Outfitters	2359
Perch Lake Resort	2828
Photo Canoe Trips	2621
Quetico North Tourist Services	929-3561
Quetico Provincial Park	2733
Seine River Lodge	947-2391
Sunset Country Outfitters	929-1188
Tip Top Lodge	934-2300
Wilderness Canoe Outfitters	6888
Voyageur Wilderness Program	2459

Restaurants and Coffee Shops

Aline's Cuisine	2445
Andy's Deli	2639
Atikokan Hotel	2533
Can-Am Cafe	2572
Cherie's Cafe	6225
Clark's Place	929-1102
Diversions	1414
Hoppy's Drive-In	2587
Little Falls Dining Lounge	6638
Morris' Camp	929-2341
Papa Joe's Pizza & Pasta	1234
Quetico North Tourist Services	929-3561
TJ's Coffee Shop	2000
Triple T Lunch Bar	1012
Valenca Restaurant	6620
White Otter Inn	2747

Atikokan Community Profile

Trailer Parks

Riverside Trailer Park	4514
------------------------	------

Travel

Four Seasons Travel	6606
---------------------	------

Professional Services

Accountants

Dunwoody & Company	2351
--------------------	------

Bookkeeping

H & R Block	6456
-------------	------

LLK Bookkeeping Service	6456
-------------------------	------

Computerized Business Services	6437
--------------------------------	------

U & R Tax Services	3940
--------------------	------

Chiropractors

Zmijewsky, Dr. O. P.	6779
----------------------	------

Consultants

R. E. Michels & Associates Ltd.	2435
---------------------------------	------

Doctors

Arif, Dr. S.	unlisted
--------------	----------

Giles, Dr. C.	unlisted
---------------	----------

Grayson, Dr. W.R. (coroner)	6427
-----------------------------	------

Kristjanson, Dr. G.W.	2273
-----------------------	------

Vlaar, Dr. H.	unlisted
---------------	----------

Dentists

Dr. K. L. Sawchuk	4228
-------------------	------

Lawyers

Eustace, Morgan & Derkson	2203
---------------------------	------

Phillops & McKillop	6313
---------------------	------

Shaffer, Jobbitt, Stead, Halabisky, Karlstedt, Fillmore & Barker	2221
--	------

Wolder & McLennan	4357
-------------------	------

Member of Parliament

Angus, Iain (NDP) MP	2402
----------------------	------

Hampton, Howard (DNP) MPP	2402
---------------------------	------

Optometrists

Cousineau, Dr. T.	1331
-------------------	------

Veterinarians

Nor-West Animal Clinic	274-7397
------------------------	----------

Atikokan Community Profile

Commercial/Retail Services

Beauty Shops

Lily's Beauty Salon	6696
Reflections Hair Styling	2130
Rene's Cuts & Curls	1557
Stephanie's Beauty Salon	6511

Bulk Oil Dealers

Imperial Oil Limited	2019
Texaco Canada Limited	2475

Clothing

Daniela's Exclusive Ladies' Wear	6848
Fashion Fabrics	6659
McTaggart's Limited	2143
Saan Store	6048
Walt's Dry Goods	4433

Confectionery Stores

Atikokan News Stand	4226
Triple T Lunch Bar	1012
Cow Palace Convenience Store	2490
D & L Grocery	6380
Ideal Confectionery	6314
Mike's Mart	

Drug Stores

Atikokan Pharmacy	2785
-------------------	------

Dry Cleaners

Iron City Cleaners	2375
Perth's Cleaners (drop-off agent - Fashion Fabrics)	6659

Flower & Gift Shops

Frankie's Stationery and Flowers	2202
Flowers by Linda	6474

Funeral Homes

Green's Funeral Home	1-800-465-2915
----------------------	----------------

Furniture

Gil's Furniture & Appliances	4322
------------------------------	------

Garages, Auto Dealers, Auto Repairs & Related

Atikokan Automotive	4494
Atikokan Starter & Alternator	2640
Bait Shop	6465
Bell's Auto Service	2467
Brighams' Texaco	6205

Atikokan Community Profile

Custom Machining	6564
Chuck's Car Wash	6392
Dusty's Place	2188
Johnson's Esso	2358
Leishman's Tune-Ups	6632
Lorne's Texaco	3980
M & C Motors Ltd.	2746
Prism Auto Body	2275
Roger's Service	1255
TJ's Service	2000
<u>Glass Service</u>	
Atikokan Glass Service	2245
<u>Grocery Stores</u>	
Tomboy Foodland	2595
Smart Alex	4552
<u>Hardware</u>	
Home Hardware	2117
Macleods	6215
Thunder Bay Bearings Limited	4388
<u>Home Decorating, Cleaning, Sewing</u>	
Atikokan Upholstery Shop	1523
Carole's Janitorial Services	4254
Crystal Enterprises	1260
Girourard's Janitorial	2511
Joyce's Home Decor	6517
Fashion Fabrics	6659
<u>Jewellers</u>	
Monty's Jewellers	2006
<u>Laundromats</u>	
Atikokan Central Wash & Dry	2133
Fabricare Launderette	2646
<u>Mail Order Stores</u>	
Sears Canada	2751
<u>Photography</u>	
Darrin's Photography	1098
Jim Hopper Photograph	929-1198
Northwest Photo Services	4348
Paul Money	4348
Perron's Photography	4591
Quetico Discovery Tours	2621
Video Photography	4503

Atikokan Community Profile

Sporting Goods

Ed's Car Service	6150
Macleods	6215
Moose Track Enterprises	2832
Ski Shop	6594
Walt's Dry Goods	4433

Variety Shops

ARC Industries	2179
Marsha's Arts & Crafts	2787

Welding

Atikokan Welding & Machine Works	2561
Ward's Welding	1554

Wholesalers

Atikokan Maintenance Products	4552
-------------------------------	------

Woodworking

Armstrong Bros. Woodworking	3977
De-Signs & Specialties	2277
Sanders Woodcraft	2327

Other Services

Amway Products	1546
Atikokan Answering & Paging Service	2870
Atikokan Appliance & TV Service	2515
Atikokan Native Friendship Centre	1213
CNCP Telecommunications	6666
Electrolux Sales & Service	6637
Geoff's Mobile Signs	2241
Gil's Radio Shack	4322
Kobel Management Services Inc.	4457
Kokani Kennels	4276
Ontario Land Surveyor	929-2221
Rainbow Daycare Centre	4517
Rental Agency (Elmcrest Terrace Apts)	6576
Shearcroft Computer Services	1323
Tamaracks	2675
Zanette Investments	1070

Government

Federal

Employment & Immigration Canada	2485
	U.I.C. Inquiries 6374
Howard Hampton	2402
Iain Angus' office	2402
Post Office	6979

Atikokan Community Profile

Provincial

Brewer's Retail	4540
Family & Children's Services	2700
Liquor Licence Board of Ontario	2095
Ministry of Natural Resources	6971
Ministry of Northern Development & Mines	2701
Ministry of Transportation & Communication	6700
Northwestern Health Unit	6871
Ontario Provincial Police	2120
Probation & Parole	6212
Rainy River District Mental Health Services	2724

Municipal

Centennial Museum	6585
Economic Development Office	2757
Fire Department	2222
Library	4406
Parks & Recreation	6932
Police	2777
Public Works	4520
Township Office	2738
Tourist Bureau	4492

Education

Public School System:

Atikokan Board of Education	6941
Elementary Schools:	
Hemlock School	6039
Saturn Avenue School	6640

Secondary Schools:

Atikokan High School	2703
Resource Centre	4424
Maintenance Shop	2115

Separate School System:

St. Patrick's Separate School	2633
Secretary Treasurer	6748

Other Educational Facilities

Alternate Learning Program	2703
Atikokan Community Training	5261
Confederation College of Applied Arts & Technology	6294
Contact North	6110
Employment Learning Opportunities	1527
Independent Learning Centre	5597
Northwest Enterprise Centre	274-5395

Appendix 2
Atikokan Hydro
Electric Commission
Conditions of Service

**ATKOKAN HYDRO
ELECTRIC COMMISSION**

CONDITIONS

OF

SERVICE

APPROVAL OF REGULATIONS.....	
Part A GENERAL REGULATIONS.....	
Voltage Variation Limits.....	
Part B RESIDENTIAL SERVICES.....	
Classification.....	
Subdivisions.....	
Residential Underground Services.....	
Metering.....	
Part C SMALL GENERAL SERVICES.....	
Classification.....	
Conditions.....	
Overhead Services.....	
Underground Services.....	
Metering.....	
Part D GENERAL SERVICE-3PHASE & SINGLE PHASE OVER 200 AMPS.....	
Classification.....	
Conditions.....	
Metering.....	
Part E SINGLE PHASE SELF-CONTAINED AIR CONDITIONING UNITS.....	
Classification.....	
Conditions.....	
Part F MISCELLANEOUS.....	
Classification.....	
Conditions.....	
Part G TEMPORARY SERVICES.....	
Classification.....	
Regulations.....	
Part H INTERMEDIATE USER.....	

APPROVAL OF REGULATIONS

HYDRO ELECTRIC COMMISSION OF THE TOWNSHIP OF ATIKOKAN

REGULATIONS AND CONDITIONS OF SERVICE UNDER WHICH HYDRO ELECTRIC COMMISSION OF THE TOWNSHIP OF ATIKOKAN WILL CONTRACT TO SUPPLY ELECTRICAL ENERGY.

THESE REGULATIONS AND CONDITIONS OF SERVICE MAY BE AMENDED FROM TIME TO TIME AND SUPERSEDE ALL SUCH REGULATIONS PREVIOUSLY MADE BY THIS COMMISSION.

THROUGHOUT THESE REGULATIONS THE TERM "CUSTOMER" WILL BE TAKEN TO MEAN THE PARTY CONTRACTING TO PURCHASE ELECTRICAL ENERGY. THE TERM "COMMISSION" WILL BE TAKEN TO MEAN HYDRO ELECTRIC COMMISSION OF THE TOWNSHIP OF ATIKOKAN.

THE REGULATIONS CONTAINED HEREIN HAVE BEEN DULY APPROVED AND AUTHORIZED BY THE COMMISSION UNDER

DATE _____

EFFECTIVE DATE _____

PART A

GENERAL

The Commission agrees to use reasonable diligence in providing a regular and uninterrupted service but does not guarantee a constant service or the maintenance of unvaried voltage or frequency and will not be liable for damages to the customer by reason of any failure in respect thereof.

The Commission enacts as part of these regulations the standard interpretation of rates for the supply of electric service and energy in urban municipalities as approved by Ontario Hydro.

All rates for service and energy shall be in accordance with schedules approved by the commission and shall be subject to revision at any time upon the order or approval by the Commission.

There shall be no discrimination between customers of the Commission as to rates or service under the conditions of supply.

Should any disagreement arise out of the wording or intent of the clauses contained herein, it shall be referred to the Commission whose decision will be final.

The Commission reserves the right to request a security deposit prior to connection of any service, including a new service, a transfer of service and reconnection of a service disconnected for nonpayment of bills.

The Commission shall send to each customer as soon as possible after the reading of electric meter an account showing the amount due and owing by the customer to the Commission for service and energy supplied during the preceding period.

Each account has a "due date" and net amount is payable on or before the due date. If paid after the due date, a penalty of 5% is added to the account.

Immediately following the due date, steps shall be taken to collect the full amount of the bill. If the bill is still unpaid sixteen days after the due date, the service may be disconnected and not restored until satisfactory payment arrangements have been made. Such discontinuance of service does not relieve the customer of the liability for the balance of the term of contract nor shall the supply authority be liable for any damage on the customers' premises resulting from such discontinuance of service.

Service charges will apply for reconnection of services that have been cut off for nonpayment.

All new electrical installations or any electrical installations that are to be altered or enlarged are subject to the rules and regulations as set forth by the inspection department of the Ontario Hydro and this Commission is prevented, by law, from supplying power to, or energizing in any way, installations which have not been inspected, approved and authorized by the inspection department. Any services that have been disconnected for a period of greater than 6 months must be inspected by the Ontario Hydro inspection department and authorized prior to reconnection. All such services shall meet the minimum standards as set out in this document.

VOLTAGE VARIATION LIMITS AVAILABLE AT SERVICE ENTRANCES

NOMINAL SYSTEMS VOLTAGES	<extreme OPERATING Conditions>			
		FAVORABLE OPERATING CONDITIONS <----->		
SINGLE PHASE 120/240	106 212	110/220	125/250	127/254
THREE PHASE 3 CONDUCTOR				
*240	214	222	250	254
*600	530	550	625	635
THREE PHASE 4 CONDUCTOR				
120/208	110/190	223/194	125/216	127/220
347/600	306/530	318/550	360/625	367/635
*Three phase - 3 conductor voltages at 240 and 600 no longer supplied for new services.				

PART B

SUBJECT: RESIDENTIAL SERVICES

CLASSIFICATION:

1. Electrical energy will be supplied at 3 wire overhead single phase having a nominal voltage 120/240, maximum 200 amperes. (To a maximum 50 meters. Distances greater than 50 meters will require a capital contribution from the customer).
For single phase services 400 amperes or larger, a primary service and pad mounted transformer installation may be required. In addition, it will be the responsibility of the customer to supply a C.S.A. approved current transformer cabinet and an outdoor meter socket equipped with a shorting device and to connect these two with a 1-1/4" (32mm) conduit for the Commission's meter wiring.
New services 400 amperes or larger will not be approved automatically. Contact should be made with the Hydro Electric Commission of the Township of Atikokan in the initial stages of planning. The customer will be required to pay for all or part of the costs associated with the project. A central metering arrangement may be considered for these installations.
- 2A) Services for all new single dwellings will not be less than 100 amperes in capacity, distribution panel, wire and conduit sizes as governed by Ontario Hydro regulations.
- B) Services for multiple occupancy units or duplexes, similar in all respects to single dwellings (wherein units are dependent of each other) shall be not less than 100 amperes for each unit.
- C) Services for multiple occupancy units of the "apartment type" (wherein units are dependent on a main or master unit) are to have capacities as:
 - Service for main or master unit
 - 100 amperes minimum
 - Service for each dependent unit or apartment
 - 100 amperes recommended
 - 60 amperes minimum
3. If an additional service is to be installed in a building this additional service shall conform with the requirements set out by the Commission. The existing service, if not in full accordance with the present regulations, shall be remodelled with location changed to that of the new service.
4. Before a service stack is installed, its location shall be approved by a representative of the Commission.

5. The customer's wiring shall be brought outside the building to a point on the building wall nearest commission pole line or within 2 feet (.6 metres) of the corner of the building wall nearest commission pole line, where it will not interfere with windows, awnings or other parts of or attachments to the building and so located that it will be most accessible to service wires brought from the commission's nearest pole. In cases where the required height above graded level or sidewalk can be obtained without the use of a service mast, the extension of the 2 foot (.6 metres) dimension to a point not more than half-way along the building wall can be allowed by the Commission, provided the above noted clearances are maintained.
6. The height of the lowest service conductor at the point of service attachment shall be as high as practicable but in no case less than a minimum height of 16 feet (5 metres) above finished grade level or sidewalk (whichever is the highest) for all services and made in such a way that telephone attachments can be made at not less than one foot clearance below electrical wires. The above height may be reduced to 15 feet (4.6 metres) when it can be obtained without using a mast or by using a mast extended 5 feet (1.5 metres) over the roof line.
7. Where service conductors cross a road, private land or a public place accessible to vehicles or mobile machinery the height of service attachments shall be approved by the Commission. All or a part of the construction cost to provide for increased clearance may be at the customer's expense.
8. Where height of the building is insufficient to permit the required height of service conductors, a (C.S.A.) approved service mast shall be used. The top of this mast must be at least 3 feet (.91 metres) above the finished roof measured perpendicularly to the roof to allow for snow conditions.
9. The building itself or the attached service mast must be sufficiently strong to accommodate the Commission service conductors. In addition to supplying the service mast, the customer will supply and install the service dead-ending device including the insulator or insulators. This applies also in case of any changes of points or attachments, e.g. upgrading of the wiring, installation of siding, stucco, etc.
- 10a) Only one connection from the Commission's distribution system will be made to one dwelling unit. A dwelling unit can consist of a principal building and auxiliary buildings.
- 10b) Under certain circumstances the Commission will waive rule 10a) and allow a second connection from the Commission's distribution system to a second building located on the customer's property. This will be considered when the customer owns a large piece of property and there is substantial distance between the original service and the auxiliary building which requires power. Contact the Hydro Electric Commission to determine if this rule applies. The decision of the Hydro Electric Commission will be final.

11. The customer shall supply or pay for any distribution equipment and labour necessary to complete a service in excess of 100 feet (30.5 metres) on private property.
12. In certain parts of the Commission service area with low population density and where primary facilities must be constructed to provide service, the customer may be required to pay for all or a part of the associated project costs as a capital contribution.
The customer has the option to construct such primary facilities to Hydro Electric Commission of the Township of Atikokan standards.
13. No electrical equipment will be connected to a customer's service which will produce an undesirable system disturbance which may be reflected back to the Commission's low voltage or high voltage circuits. Should the customer contemplate the installation of such a piece of equipment, he shall notify the Commission in advance to ascertain if its installation is permissible, and to what extent additional facilities are required to nullify the undesirable effect.

All or a part of the costs to correct the situation may be borne by the customer.

These regulations shall apply to all new services and also to all services being altered or renewed.

SUBDIVISIONS

The developer of a new subdivision, including a mobile home subdivision, will be required to consult with the Hydro Electric Commission of the Township of Atikokan in the early stages in order for the Hydro Electric Commission to do preliminary planning and to obtain required easements.

This process should take place as much as a year prior to power being required in the subdivision.

The final electrical design requires Hydro Electric Commission approval before any installation work may begin.

Where the developer elects to be responsible for the installation he will:

- use a competent electrical consultant to design the system and supervise the installation. The design and installation must be approved by the Hydro Electric Commission of the Township of Atikokan.

Where the developer elects to retain Atikokan Hydro Electric Commission as a consultant/contractor, the developer will be provided with a fixed fee based on estimated project costs.

In such case the Hydro Electric Commission will require 40% of the total estimated cost as a deposit.

Projects of this type will be undertaken by Atikokan Hydro Electric Commission between May 15 to November 15 only.

RESIDENTIAL UNDERGROUND SERVICES

Customers considering an underground service, in a location other than a new subdivision, shall be responsible for the installation to Ontario Hydro and Atikokan Hydro Electric Commission specifications. The customer must allow sufficient conductor and conduit to reach Atikokan Hydro Electric Commission distribution secondary. Work on the pole must be done by Atikokan Hydro Electric Commission personnel and will be subject to an appropriate charge.

Services longer than 50 metres will not be permitted.

Underground service may not be permitted if the intended user pole carries primary conductors, etc. or if the service pole is not bucket truck accessible, or if a secondary riser would unnecessarily clutter the pole or restrict climbing space. Responsibility for subsequent maintenance and repair rests with the customer.

If a customer requires that an existing underground service be relocated, the customer will be required to pay the full costs incurred by the Hydro Electric Commission for such relocation. The Atikokan Hydro Electric Commission may make available an acceptable cable for sale to the customer. The attachment charges must be paid prior to connection, and the cable charges to be paid upon receipt of invoice. All trenching, sand, and back filling is the responsibility of the customer.

METERING

Outdoor metering for residential services, single phase, 100 ampere and 200 ampere service sizes.

- A) Standard arrangement for installation of outdoor socket type meters.
- B) All meters for new services or service changes for residential and small commercial customers will be of the socket type and will be mounted outdoors in an approved accessible location. The centre of the meter to be between 5'4" (1.6 metres) to 6'0" (1.8 metres) above finished grade of the pavement, or ground level.
- C) Where local conditions are such as to render outdoor metering impractical or inadvisable, such as for multiple family buildings with more than two sub-services, socket meters may be mounted in an approved location indoors, subject to the approval of the Atikokan Hydro Electric Commission. The centre line of the meter to be not less than 4'0" (1.2 metres) and not more than 6'0" (1.8 metres) from the floor. Access to the meter location must be available to Utility personnel at all times. This access may be in the form of giving the commission keys to the meter locations.

- D) In either case the meter socket or ring (screw type) which is to be C.S.A. approved is to be mounted in, and form part of the service or sub-service conduit, duct or multiple meter trough. The wiring connections to be on the supply side of all service protection and control equipment such as circuit breakers, fuses or switches which control the customer's load to be metered.
- E) The meter socket or ring must meet the requirements of the Commission's meters and subject to the Commission approval.
- F) No equipment on the line side of the meter, including the meter, shall be tampered with without the permission of the Atikokan Hydro Electric Commission.
- G) Meter mounting devices should be located not more than 10 feet (3 metres) back from the wall of the building nearest the Commission's distribution system (see Ontario building code), preferably accessible for servicing and meter reading on drive-way or sidewalk side.

PART C

SUBJECT: SMALL GENERAL SERVICES

CLASSIFICATION:

Part C covers small commercial services and includes small stores, small service stations, restaurants, churches, small offices and other establishments with similar loads. It is the customer's responsibility to ascertain from the Atikokan Hydro Electric Commission if he can be served under Part "C". The Commission reserves the right to determine under which part a customer is to be served.

CONDITIONS

1. Service to buildings included in part "C" will be 3 wire single phase having a nominal voltage of 120/240 maximum 200 amperes. For single phase services 400 amperes or larger, a primary service and pad mounted transformer installation may be required. In addition it will be the responsibility of the customer to supply a C.S.A. approved current transformer cabinet and an outdoor meter socket equipped with a shorting device and to connect these two with a 1 1/4" (32mm) conduit for the Commission's meter wiring.
New services 400 amperes or larger will not be approved automatically. Contact should be made with Atikokan Hydro Electric Commission in the initial stages of planning. The customer will be required to pay for all or part of the costs associated with the project.

2. Services are to have capacities as:

a) Overhead Services

- a1) 100 ampere minimum service with 100 ampere meter socket with service length up to a maximum of 50 metres. Distances greater than 50 metres will require the cost to be born by customer.
- a2) 200 ampere maximum service wit 200 ampere meter socket with service length up to a maximum of 50 metres. Distances greater than 50 metres will require the cost to be born by customer.

b) Underground Services

- b1) 100 ampere minimum and 200 ampere maximum service, all with a full 200 ampere meter socket. Two conduits of a minimum of 2" diameter, will be required, one for line conductors and one for load conductors. The maximum service length will be 50 metres, as measured along the cable route from the base of the service pole to a point on the building directly below the meter.
- 3. All single phase motors over 3 horsepower shall have compensated starting.
 - 4. The customer's wiring shall be brought outside the building to a point on the closest wall to the Commission's pole line or distribution system. For an overhead service, the service mast must not interfere with windows, awnings or other parts of/or attachments to the building.
 - 5. The height of the lowest service connector at the point of service attachment shall be as high as practicable, but in no case less than a minimum of 15 feet(4.5 metres) and a maximum of 20 feet (6 metres), above finished grade level for all services. The customer will supply and install the service dead-ending device including the insulator or insulators. The spacing between insulators shall not be less than that covered by Ontario Hydro regulations where more than one insulator is required.
 - 6. Where height of the building is insufficient to permit the required height above finished grade level, a C.S.A. approved service mast must be used. The top of this mast must be at least 3 feet above the finished roof to allow for snow conditions.
 - 7. The building itself or that attached service mast must be sufficiently strong to accommodate the Commission's service conductors.
 - 8A. Only one connection from the Commission's distribution system will be made to one premises. A premises can consist of a principal building and auxiliary buildings.

- 8B. Under certain circumstances the Commission will waive rule 8A and allow a second connection from the Commission's distribution system to a second building located on the customer's property. This rule will be considered when the customer owns a large piece of property and there is a substantial distance between the original service and the auxiliary building which requires power. Contact Atikokan Hydro Electric Commission to determine if this rule will be applied.
9. If additional service capacity is required in a building, this additional service capacity shall conform with the requirements as set out in these conditions. The completed service upgrade shall be remodelled with location changed to that of the new service.
10. No electrical equipment shall be connected to a customer's service which produces an undesirable system disturbance which may be reflected back to the Commission's low voltage or high voltage circuits. Should the customer contemplate the installation of such a piece of equipment (ie. welders) he shall notify the Atikokan Hydro Electric Commission in advance to ascertain if its installation is permissible and to what extent additional facilities are required to nullify the undesirable effect.
All or part of the costs to correct the situation will be borne by the customer.
11. The customer shall supply or pay for any distribution equipment and labour necessary to complete an overhead service in excess of 50 metres from the Commission's distribution system, on private property.
12. Underground Service

Customers considering an underground service shall be responsible for the installation to Ontario Hydro and Atikokan Hydro Electric Commission specifications.
The customer must allow sufficient conductor and conduit to reach Atikokan Hydro Electric Commission distribution secondary. Work on the pole must be done by Atikokan Hydro Electric Commission personnel.

Services longer than 50 metres will not be permitted.

Underground secondary service may not be permitted if the intended user pole carries primary conductors etc., or if a secondary riser would unnecessarily clutter the pole or restrict climbing space.

Responsibility for subsequent maintenance and repair of an underground secondary service of this type rests with the customer. If a customer requires that an existing underground service be relocated, the customer will be required to pay the full costs incurred by the Atikokan Hydro Electric Commission for such relocation.

13. These conditions apply to all new services and also to all services being altered or remodelled.
14. In certain parts of the Atikokan Hydro Electric Commission services area with low population density and where primary facilities must be constructed to provide service, the customer may be required to pay for all or part of the associated projected costs as a capital contribution.
The customer has the option to construct such primary facilities to Atikokan Hydro Electric Commission standards.
If the customer chooses this option, Atikokan Hydro Electric Commission must be contacted in the early planning stages.
15. Temporary services, up to a maximum of 100 amperes at 120/240 volts will be charged a service charge. If a line extension or transformer installation is required for these services, the customer will pay for this additional work. It is the responsibility of the customer to check with Atikokan Hydro Electric Commission to determine the amount of these charges. Installation and estimated removal costs to be billed at time of installation, if total costs are requested by the customer on his purchase order. There will also be a transformer rental charge for transformers required for temporary services.

16. **Metering**

Outdoor metering for small commercial services, 100 ampere and 200 ampere service sizes.

- a) Standard arrangement for installation of outdoor socket type meters.
- b) All meters for new services or service changes for residential and small general customers will be of the socket type and will be mounted outdoors in an approved accessible location. The centre of the meter to be between 5'4"(1.6 metres) to 6'0" (1.8 metres) above finished grade to the pavement or ground level.
- c) Where local conditions are such as to render outdoor metering impracticable or inadvisable, such as for multiple family buildings with more than two sub-services, socket meters may be mounted in an approved location indoors, subject to the approval of Atikokan Hydro Electric Commission. The centre line of the meter to be not less than 4'0"(1.2 metres) and not more than 6'0"(1.8 metres) from the floor.
- d) In either case the meter socket or ring (screw type) which is to be C.S.A. approved, is to be mounted in, and form part of, the service or sub-service conduit, duct or multiple meter trough. The wiring connections to be on the supply side of all service protection and control equipment such as circuit breakers, fuses or switches which control the customer's load to be metered.

- e) The meter socket or ring must meet the requirements of the Commission's meters and therefore is subject to the Commission's approval.
- f) No equipment on the line side of the meter, including the meter, shall be tampered with, without the permission of the Atikokan Hydro Electric Commission.
- g) The preferable locations for meter mounting devices are those accessible for servicing and meter reading on drive-way or side-walk side.
- h) Where multiple meters are requested, no main switch is required for 1 (one) 100 amperes and 2 (two) 60 amperes sub-services. Any additional number of meters, where these may be allowed by the electrical code, will require a main switch with 200 ampere fusing. Under these circumstances, (main switch) the meters may be located inside the building.

PART D

SUBJECT: GENERAL SERVICES
SINGLE PHASE ABOVE 200 AMPERES
ALL THREE PHASE SERVICES

- NOMINAL 3 PHASE SECONDARY VOLTAGES PROVIDED FOR NEW SERVICES ARE:
120/208 4 conductor
347-600 4 conductor

CLASSIFICATION:

This type of service will normally be applicable to small industry, departmental or large stores such as supermarkets, shopping centres, storage buildings, large garages, restaurants, office buildings, institutions, hotels, hospitals, schools or colleges, arenas, apartment blocks or buildings and other comparable establishments.

CONDITIONS:

1. Single phase services over 200 amperes may require an approved pad mounted transformer installation, at the discretion of Atikokan Hydro Electric Commission. A customer capital contribution may be required to cover all or part of the associated costs. Construction on private property must be shown on the building plans and must be approved by Atikokan Hydro Electric Commission well in advance of construction.
2. Three phase services:
Three phase services at approved nominal voltages will be supplied, subject to Atikokan Hydro Electric Commission approval under the following conditions:

- a) Transformer installation will be in an approved enclosure - pad mounted - using conventional distribution transformers per C.S. A. and Atikokan Hydro Electric Commission Standards.

OR

- b) Transformer installation may, at the discretion of Atikokan Hydro Electric Commission, be on an approved overhead structure. A three phase installation under a) or b) may require a customer capital contribution to cover all or a part of the associated costs. In either case, space must be provided on the customer's property and the location approved by Atikokan Hydro Electric Commission.

When a capital contribution is required, subsequent maintenance, or replacement of faulty transformers or related hardware is the responsibility of Atikokan Hydro Electric Commission.

- NO TRANSFORMER ALLOWANCE APPLICABLE.

- c) Customer supplied transformation equipment must be approved by Atikokan Hydro Electric Commission and is subject to a transformation allowance discount at the current rate.
- d) If a transformer vault is required, the customer will construct the vault to Atikokan Hydro Electric Commission and Ontario Hydro Standards. The customer will also supply and install the required underground duct, to Atikokan Hydro Electric Commission standards.

Two transformer options are available.

- d1) The Atikokan Hydro Electric Commission will supply standard oil filled distribution transformers (to a maximum 167 KVA single phase and 500 KVA three phase) in a properly constructed vault. This vault must be readily accessible for transformer installation or removal. Access doors to the outside are preferable. Construction plans for new vaults are subject to Atikokan Hydro Electric Commission approval. This option requires a customer capital contribution as per the current schedule. No transformer allowance applicable.
- d2) The customer will supply and install either oil filled or dry type transformation to Atikokan Hydro Electric Commission and Ontario Hydro standards in a properly constructed vault. This vault shall be accessible in the manner of option (1) and construction plans for new vaults are subject to Atikokan Hydro Electric Commission approval. Transformer allowance will apply. The customer must consult with the Atikokan Hydro Electric Commission in the early planning stages.
- e) Information on connected load (K.W.) and demand load (K.W.) will be furnished to Atikokan Hydro Electric Commission in the early stages of planning.

- f) Drawings and specifications on transformers, ducts, switchboards and metering locations must be provided to Atikokan Hydro Electric Commission in the early stages of planning.
 - g) Atikokan Hydro Electric Commission reserves the right to inspect underground ducts prior to back filling.
3. Only one connection from the Commission's pole line or distribution system will be made to one premises. A premises can consist of a principal building and auxiliary buildings. Under exceptional circumstances the Commission may allow a second connection from the distribution system to a second building located on the customer's property. This may be considered when the customer owns a large piece of property and there is a substantial distance between the original service and the auxiliary building requiring power. Atikokan Hydro Electric Commission's decision in this regard will be final.
 4. Primary disconnecting devices, supplied by Atikokan Hydro Electric Commission are intended to make or break transformer excitation current and not load current. The customer must provide load break facilities on the low voltage side of the transformation. All switches and fuses on the low voltage side must meet Ontario Hydro inspection department requirements.
 5. No electrical equipment will be connected to a customer's service which will produce an undesirable system disturbance which may be reflected back to the Commission's low voltage or high voltage circuits. Should the customer contemplate the installation of such a piece of equipment, he shall notify the Commission in advance to ascertain if its installation is permissible, and to what extent additional facilities are required, to nullify the undesirable effect. All or part of the costs to correct the situation may be borne by the customer.
 6. If the Commission's powerlines have to be extended to supply required power to the customer's property, the customer may be required to pay for all or part of this extension.
 7. Where ground fault protection is required, the approval of the Ontario Hydro Inspection Department must be obtained.
 8. Atikokan Hydro Electric Commission recommends that the customer install his own low voltage protection equipment against the possibility of the supply line losing power on one or more phases.
 9. **METERING**
 - a) General Requirements
 - 1) The following requirements apply to all services under this section: The customer must supply drawings and specifications to Atikokan Hydro Electric Commission for approval on any proposed switchboard and metering installations before any tenders are

called for or any construction commences. A written approval must be received before equipment is cleared for manufacture, with the customer giving a reference number to the Atikokan Hydro Electric Commission to enable current and potential transformers to be ordered and shipped to the manufacturer for installation in the switchgear. The height of the meter or meters must be between 4 feet (1.2 metres) and 6 feet (1.8 metres) above the floor level.

- 2) The meter panel shall be Hydro approved, piano hinged type, and test blocks. The steel to be at least 1/8" (3.15mm) thick and edges to be rolled or formed for rigidity. Specifications for this panel require the approval of Atikokan Hydro Electric Commission and Ontario Hydro Inspection Department.

b) Apartment Buildings

For non electrically heated apartment buildings, the owner may elect to use either bulk metering for the building or individual meters for each tenant. For all electrically heated buildings, each tenant must be individually metered. It is desirable to put all meters at one location if possible. If not, meters must be grouped and located as approved by Atikokan Hydro Electric Commission. If more than 20 meters are required, an additional grouping of meters may be approved by Atikokan Hydro Electric Commission. C.S.A. approved meter stacks are preferred.

- c) Where meters are located indoors, a light receptacle must be installed over and in front of the service switches and wired to the load side of the owner's meter. Space in front of switches and meters must be free of all obstructions and readily accessible to meter readers.

- d) An approved meter cabinet shall be mounted with centre line a maximum of 6 feet (1.8 metres) and a minimum of 4 feet (1.2 metres) above the floor.

e) Minimize size of meter cabinet:

- 1) 100 and 200 amp. service - 20"Wx30"Hx10"D
(508mmx762mmx254mm)
- 2) 400 to 1000 amp. service - 36"Wx36"Hx10"D
(914mmx914mmx254mm)
- 3) For mounting the meters at remote locations use a 20"w x 30"H x 10"D (508mmx762x254 mm) Cabinet and connect to C.T. compartment using 1 1/4" (31.8mm) conduit.

f) Seals

All pull in boxes, bus troughs, etc. where installed ahead of meter, shall be equipped with padlock sealing devices. Seals on meters, service boxes or pull in boxes etc. must not be broken or tampered with. Unauthorized persons tampering with seals will be subject to prosecution. Meters must not be removed from service without the authorization from Atikokan Hydro Electric Commission.

g) Meter Groupings

Enough wall space must be provided in the electrical room or rooms in each building to provide space for meter cabinets (3 phase sub-services) or meter panels (single phase sub-services) to allow for the following meter groupings:

1) One building on property

It is desirable to put all meters at one location if possible. If not, meters must be grouped and located as approved by Atikokan Hydro Electric Commission. If more than 20 meters are required, an additional groupings of meters may be approved by Atikokan Hydro Electric Commission.

2) Several buildings on property, such as a shopping mall with separate buildings.

The meters in each building must be grouped at one location.

3) Large shopping malls (under one roof), requiring several voltages to their mall portion and anchor stores. The meters must be grouped at one location for each transformer room location.

PART E

SUBJECT: SINGLE PHASE SELF-CONTAINED AIR CONDITIONING UNITS

CLASSIFICATION:

Part "E" covers single phase, self-contained air-conditioning units, which are supplied directly from the Atikokan Hydro Electric Commission's low voltage distribution system.

CONDITIONS:

1. The name-plate data on 120 and 240 volt single phase units shall include the voltage rating, starting current, running current, nominal horsepower rating, the running power factor and BTU/HR. output.
2. The starting current of manually operated single phase 120 and 240 volt units shall not exceed 75 amperes under any condition of operation.
3. The starting current of automatically operated single phase units shall not exceed 46 amperes at 120 volts, 57.5 amperes at 240 volts.
4. The running power factor shall not be less than:
75 percent for motors nominally rated at 1/3 h.p.
80 percent for motors nominally rated at 1/2 h.p.
85 percent for motors nominally rated at 3/4 h.p. or larger.

PART F

SUBJECT: MISCELLANEOUS

CLASSIFICATION:

Part "F" covers such miscellaneous topics as advertising sign boards, fluorescent lighting, neon signs, and welding machines.

CONDITIONS:

1. Advertising sign boards

Services must be suitably wired 120/240 volts and be metered at 120/240 volts - minimum 100 amp socket.

2. Fluorescent Lighting and Neon Signs

All new installations of fluorescent lighting or neon signs must have suitable power factor correction equipment to produce a power factor of not less than 90 per cent. Atikokan Hydro Electric Commission will refuse to deliver service to any installation which does not comply with the above provisions. In the event of a dispute the power factor of any such installation shall be determined by Atikokan Hydro Electric Commission.

3. Welding Machines

Welding machines operated at 3 phase are desirable.

4. In all applications, single phase motors over 3 horsepower shall have compensated starting.

PART G

SUBJECT: TEMPORARY SERVICE

CLASSIFICATION:

Part "G" of these regulations covers the supply of electrical energy for temporary purposes. The term "temporary" applies to nonpermanent installations such as may be required for construction purposes, short term processing, etc.

REGULATIONS:

1. Energy may be supplied at the nominal utilization single phase voltage of 120/240 volts or three phase 120/208 WYE if available at the particular location.
2. A suitable charge will be levied for the connection of a temporary service. This charge may include all or a part of the actual cost incurred by Atikokan Hydro Electric Commission.
3. The customer shall present to the Commission full details as to the amount of temporary load required and also the desired utilization voltage.
4. No electrical equipment shall be connected to a customer's service which will produce an undesirable system disturbance which may be reflected back to the Commission's low voltage or high voltage circuits. Should the customer contemplate the installation of such a piece of equipment he shall notify the Commission in advance to ascertain if its installation is permissible and to what extent additional facilities are required to nullify the undesirable effect. All or part of the costs to correct the situation may be borne by the customer.
5. Before a service is energized it must have been approved and authorized by Ontario Hydro Inspection Department.

PART H

INTERMEDIATE USER

An intermediate user shall be as defined in the Standard Application of Rates. All intermediate users shall be subject to time of use metering.

Metering will be of a recorded pulse type and may require capital contribution.

Transformation will require capital contribution and may be either Utility or customer owned.

All general requirement in terms of line extensions, etc. shall apply.